

DEPARTMENT OF THE ARMY TECHNICAL MANUAL

---

ORGANIZATIONAL MAINTENANCE REPAIR PARTS  
AND SPECIAL TOOLS LISTS

TRUCK, LIFT, FORK, ELECTRIC, SOLID RUBBER  
TIRES, 4000 LBS CAPACITY, 144 IN LIFT  
CLARK MODEL EC 40  
ARMY MODEL MHE 185  
FSN 3930-086-6677

---

HEADQUARTERS, DEPARTMENT OF THE ARMY  
OCTOBER 1968

**ORGANIZATIONAL MAINTENANCE REPAIR PARTS AND  
SPECIAL TOOLS LISTS**

**TRUCK, LIFT, FORK, ELECTRIC, SOLID RUBBER TIRES,  
4000 LBS CAPACITY 144 IN LIFT  
CLARK MODEL EC 40  
ARMY MODEL MHE 185  
FSN 3930-086-6677**

**Current as of 11 September 1968**

	Paragraph	Page
SECTION I. INTRODUCTION		
Scope .....	1	iii
General.....	2	iii
Explanation of columns.....	3	iii
Special information .....	4	v
How to locate repair parts.....	5	v
Abbreviations .....	6	v
Federal supply codes for manufacturers.....	7	v
Recommendations for maintenance manual improvements .....	8	vi
II. PRESCRIBED LOAD ALLOWANCE .....		vii
III. SPECIAL TOOLS, TEST AND SUPPORT EQUIPMENT FOR ORGANIZATIONAL MAINTENANCE (NOT APPLICABLE)		
IV. REPAIR PARTS FOR ORGANIZATIONAL MAINTENANCE		
Group 06. Electrical System		
0607 Instruments.....		1
0608 Miscellaneous items .....		1
0609 Lights.....		3
0610 Sending units and warning switches.....		4
0611 Horn and wiring.....		4
0612 Battery and cables.....		5
10. Front Axle		
1000 Front axle assembly.....		5
1002 Differential .....		8
11. Rear Axle		
1104 Steering Mechanism .....		8
12. Brakes		
1201 Hand brake .....		8
1202 Service brake .....		10
1204 Hydraulic brake system.....		11
1206 Mechanical brake system.....		13

This manual together with TM 10-3930-252-35P, 16 October 1968, supersedes TM 10-3930-252-25P, 6 April 1964 and C1, 4 March 1966.

Group 06-

Continued

13. Wheels		
1311	Wheel assembly .....	14
14. Steering		
1401	Steering assembly .....	15
1411	Hoses, lines, fittings.....	15
18. Body, cab, hood assemblies		
1801	Body, cab, hood, assemblies .....	19
1806	Upholstery seats .....	21
24. Hydraulic Lift Components		
2401	Hydraulic pump .....	22
2408	Hydraulic control, levers and linkage .....	22
2404	Hydraulic tilt cylinders and tilt crank.....	23
2406	Hydraulic mast column .....	24
240M	Hydraulic lines and fittings.....	25
40. Electric Motors		
4010	Master control panel assembly.....	29
4011	Fuse and fuseholder .....	30
4012	Switch.....	30
4014	Resistors.....	32
95. General Use Standardized Parts		
9501	Bulk material .....	33
SECTION V. FEDERAL. STOCK NUMBER AND REFERENCE INDEX .....		57

**SECTION I  
INTRODUCTION**

**1. Scope**

This manual lists repair parts and special tools list required for the performance of organizational maintenance of the electric lift truck.

**2. General**

a. The Repair Parts List is arranged as follows:

(1) Individual parts and major assemblies are listed alphabetically by item name within the numbered functional groups.

(2) Assembly components and subassemblies are indented and listed alphabetically by item name under major assemblies.

b. This Repair Parts and Special Tools List is divided into the following sections:

(1) *Prescribed Load Allowance (PLA)--Section II.* A consolidated listing of repair parts quantitatively allocated for initial stockage at the organizational level. *This is a mandatory stockage allowance.*

(2) *Special Tools, Test and Support Equipment--Section III.* A list of special tools, test and support equipment authorized for the performance of maintenance at the organizational level (Not applicable).

(3) *Repair Parts--Section IV.* A list of repair parts authorized for the performance of maintenance at the organizational level.

(4) *Federal Stock Number and Reference Number Index Section V.* A list of Federal stock numbers followed by reference numbers in ascending: alpha-numeric sequence, cross-referenced .to index number.

**3. Explanation of Columns**

The following provides an explanation of columns in the tabular lists in Sections II, III, and IV:

a. *Source, Maintenance and Recoverability Codes (SMR):*

(1) Source Code indicates the selection status and source for the listed item. Source codes are:

Code	Explanation
P	Applied to repair parts which are stocked in or supplied from DSA/GSA or Army supply system, and authorized for use at indicated maintenance categories.
M	Applied to repair parts which are not procured or stocked but are to be manufactured at indicated maintenance categories.
A	Applied to assemblies which are not procured or stocked as such but are made up of two more units, each of which carry individual stock numbers and descriptions and are procured and stocked and can be assembled by units at indicated maintenance categories.
X	Applied to parts and assemblies which are not procured or stocked, the mortality of which is normally below that of the applicable end item, and the failure of which should result in retirement of the end item from the supply system.
X1	Applied to repair parts which are not procured or stocked, the requirement for which will be supplied by use of the next higher assembly or components.
X2	Applied to repair parts which are not stocked. The indicated maintenance category requiring such repair parts will attempt to obtain them through cannibalization; if not obtainable through cannibalization, such repair parts will be requisitioned with supporting justification through normal supply channels.
C	Applied to repair parts authorized for local procurements. If not obtainable from local procurement, such repair parts will be requisitioned through normal supply channels with supporting statement of nonavailability from local procurement.
G	Applied to major assemblies that are procured with PEMA (Procurement Equip-

ment Missile Army) funds for initial issue only to be used as exchange assemblies at DSU and GSU maintenance level. These assemblies will not be stocked above DSU and GSU or returned to depot supply level.

**Note. Source code is not shown on common hardware items known to be readily available in Army supply channels through local procurement.**

(2) Maintenance Code, .indicates the lowest category of maintenance authorized to install ,the listed item. The maintenance level code is:

Code	Explanation
O	Organizational maintenance

(3) Recoverability Code indicates whether unserviceable items should be returned for recovery or salvage. Items not coded are expendable. Recoverability codes are:

Code	Explanation
R	Applied to repair parts and assemblies which are economically repairable at DSU and GSU activities and normally are furnished by supply on an exchange basis.
T	Applied to high dollar value recoverable repair parts which are subject to special handling and are issued on an exchange basis., Such repair parts normally are repaired or overhauled at depot maintenance activities.
U	Applied to repair parts specifically selected for salvage by reclamation units because of precious metal content, critical materials, high dollar reusable casings or castings (4) This column also lists, below the SMR code, an index number for each item in ascending numerical sequence, which is used to locate items in the publication when the Federal stock number and/or reference number is known.

*b. Federal Stock Number:* This column indicates the Federal stock number for the item.

*c. Description:* This column indicates the Federal item name and any additional description of the item required. A part number or other reference number is followed by the applicable five-digit Federal supply code for manufacturers in parentheses. Material required for manufacture or .fabrication is identified.

*d. Unit of Issue:* This column indicates the unit used as a basis for issue, e.g., ea, pr, ft, yd, etc

*e. Quantity Incorporated in Unit Pack:* This column indicates the actual quantity contained in the unit pack.

*f. Quantity Incorporated in Unit:* This column indicates the quantity of the item used in the functional group.

*g. Fifteen-Day Organizational Maintenance Allowance, Column (4) of Section II and Column (7) of Section IV.*

(1) The allowance columns are divided into four subcolumns. Indicated in each subcolumn is the quantity of items authorized for the number of equipments supported. Items authorized for use as required but, not for initial stockage are identified with an asterisk in the allowance column.

(2) The quantitative allowances for organizational level of maintenance represents one initial prescribed load for a 15-day period for the number of equipments supported. Units and organizations authorized additional prescribed loads will multiply the number of prescribed loads. authorized by the quantity of repair parts reflected in the appropriate density column applicable to the number of items supported to obtain the total quantity of repair parts authorized.

(3) Organizational units providing maintenance for more than 100 of these equipments shall determine the total quantity of parts required by converting the equipment quantity to a decimal factor by placing a decimal point before the next to last digit of the number to indicate hundredths, and multiplying the decimal factor by the parts quantity authorized in the 51-100 allowance column. Example, authorized allowance for 51-100 equipments is 40; for 150, equipments multiply 40 by 1.50 or 60 parts required.

(4) Subsequent changes to allowances will be limited as follows: No change in the range of items is authorized. If additional items are considered necessary, recommendation should be forwarded to U. S. Army Mobility Equipment Command for exception or revision to the allowance list. Revisions to the range of items authorized will be made by this Command based upon engineering experience, demand data, or TAERS information.

*h. Illustration, Column (8).* This column is divided as follows:

(1) *Figure Number Column (8a).* Indicates the figure number of the illustration in which the item is shown.

(2) *Item Number, Column (8b).* Indicates the callout number used to reference the item in the illustration.

**4. Special Information**

*a.* Repair parts mortality has been based on 3,000 hours of operation per year.

*b.* Parts which require manufacture or assembly at a category higher than that authorized for installation will indicate in the source column the higher category.

*c.* The following publications pertain to the electric lift truck and its components:

TM 10-3930-252-12	Operator and organizational maintenance manual.
TM 10-3930-252-35	Field and depot maintenance manual.
TM 104930-252-35P	DS, GS, And Depot maintenance repair parts and special tool lists.

**5. How to Locate Repair Parts**

*a.* When Federal stock number or reference number is unknown:

(1) *First.* Using the table of contents, determine the functional group within which the repair part belongs.

(2) *Second.* Find the illustration covering the functional group to which the repair part belongs.

(3) *Third.* Identify the repair part on the illustration, and note the illustration figure and item number of the repair part.

(4) *Fourth.* Using the Repair Parts Listing, find the functional group to which the repair part belongs and locate the illustration figure and item number noted on the illustration.

*b.* When Federal stock number or reference number is known:

(1) *First.* Using the Index of Federal Stock Numbers and Reference Numbers, find the pertinent Federal Stock Number or Reference Number. This index is in ascending alpha-numeric sequence cross-referenced to an index number.

(2) *Second.* Using the Repair Part Listing,

find the index number referenced in the Index of Federal Stock Numbers and Reference Numbers.

**6. Abbreviations**

amp .....	ampere (s)
AR .....	As Required
cd.....	cadmium
c/o.....	consist (s) of
cp.....	candle power
deg.....	degree
ctd.....	coated
ea .....	each
ext.....	external
fil.....	fillister
fl .....	flat
FSN .....	Federal stock number
ft .....	foot (feet)
GRP.....	Group
hd .....	head
hex.....	hexagon
id.....	inside diameter
in.....	inch (es)
int.....	internal
lg.....	long (length)
lh.....	left hand
med .....	medium
MHE.....	Material Handling Equipment
NC .....	American National Coarse Thread
AF.....	American Standard Taper Pipe Thread
NPTF .....	American Standard Taper Pipe Thread (Dryseal)
od .....	outside diameter
rd .....	round
rh .....	right hand
S.....	Steel
sq.....	square
thk.....	thick (ness)
TM .....	Technical Manual
u/o .....	used on
v .....	volt (s)
w/.....	with
Zn .....	zinc

**7. Federal Supply Codes for Manufacturers**

Code	Manufacturer
00624 -----	Griffin Mfg Co Inc
12603 -----	Clark Equipment Co
13445 -----	Cole-Hersee Co
21336 -----	Fafnir Bearing Co
24617 -----	General Motors Corp

Code	Manufacturer
31007 -----	International Harvester Co
59875 -----	Trw Inc., Accessories Division
40038 -----	Timken Roller Bearing Co
62983 -----	Vickers Inc., Division of Sperry Rand Corp
68477 -----	Wagner Electric Corp
700'0-----	AC Spark Plug, Div of General Motors Corp
71424 -----	Chase Shawmut Co
74400 -----	Hobbs John W Corp
80201 -----	Chicago Rawhide Mfg Co
806 59-----	AC Spark Plug Div of General Motor
81487 -----	Square Co Industrial Control Div
91929 -----	Honeywell Inc., Micro Switch Division
96906 -----	Military Standards Promulgated by Standard- ization Div Directorate of Logistic Services DSA

## 8. Recommendations for Maintenance Manual Improvements

Report of errors, omissions, and recommendations for improving this publication by the individual user is encouraged. Reports should be submitted on DA Form 2028 (Recommended Changes to DA Publications) and forwarded direct to Commanding General, U. S. Army Mobility Equipment Command, ATTN: AMSME-MPP, 4300 Goodfellow Boulevard, St. Louis, Mo. 63120.

**SECTION II  
PRESCRIBED LOAD ALLOWANCE**

(1) Federal Stock Number	(2) Description	(3) Qty Inc. in Unit Pack	(4) 15-Day Org Maint. ALW			
			(A) 1-5	(B) 6-20	(C) 21-50	(D) 51-100
	GROUP 06-ELECTRICAL SYSTEM 0609-LIGHTS					
6240-155-8720	Lamp			2	2	2
6240-196-4519	Lamp			2	2	2
6240-635-4406	Lamp unit				2	2
	0610-SENDING UNITS AND WARNING SWITCHES					
5980-072-9455	Switch					2
	GROUP 10-FRONT AXLE 1000-FRONT AXLE ASSEMBLY					
8110-100-0359	Cup					2
8110-100-0376	Cup					2
3110-100-0747	Cone and rollers					2
8110-156-6699	Bearing, ball					2
8110-227-4058	Cone and Rollers					2
5330-783-2992	Seal				2	2
5330-876-9494	Seal				2	2
	GROUP 12-BRAKES 1202-SERVICE BRAKE					
2530-976-3331	Brake shoe				2	2
5840-072-6734	Spring			2	2	2
	1206-MECHANICAL BRAKE SYSTEM					
2540-776-2844	PAD					2
	GROUP 13-WHEELS 1311-WHEEL ASSEMBLY					
8110-100-0556	CUP					2
3110-100-3553	Cone and rollers					2
3110-198-2169	Cone and rollers					2
3110-198-2170	Cup					2
5330-298-0654	Seal			2	2	2
	GROUP 24-HYDRAULIC LIFT COMPONENTS 2406-HYDRAULIC LINES AND FITTINGS					
2530-534-5568	Packing			2	2	8
4330-876-4572	Filter element		2	2	4	8
5330-064-7777	Packing					
5330-714-5265	Packing					8
	GROUP 40-ELECTRIC MOTORS 4011-FUSE AND FUSEHOLDER					
5920-072-6679	Fuse				2	2
5320-671-4569	Fuse				2	2
	4012-SWITCHES					
5930-072-6668	Repair kit				2	2
	4014-RESISTORS					
5905-978-4711	Resistor					2



(1) SMR CODE  INDEX NO.	(2) FEDERAL STOCK NUMBER	(3) DESCRIPTION  REFERENCE NO. & MFR. CODE  USABLE ON CODE	(4) UNIT OF ISSUE	(5) QTY INC IN UNIT PACK	(6) QTY INC IN UNIT	(7) 15-DAY ORGANIZATIONAL MAINTENANCE ALW				(8) ILLUS- TRATION	
						(a)	(b)	(c)	(d)	(a)	(b)
						1-5	6-20	21-50	51-100	FIG NO.	ITEM NO.
00001		SECTION IV - REPAIR PARTS FOR ORGANIZATIONAL MAINTENANCE  GROUP 06 - ELECTRICAL SYSTEM									
00002		0607 - INSTRUMENTS									
P 0	6680-072-6697	INDICATOR: battery discharge 1501880 (70040)	EA		1	*	*	*	*	1	3
00003											
P 0	6645-072-6696	METER, TIME TOTALIZING M981 (74400)	EA		1	*	*	*	*	1	1
00004											
P 0	5930-064-7749	SWITCH: headlight 50053 (13445)	EA		1	*	*	*	*	1	2
00005											
P 0	5355-518-0921	KNOB: switch, headlight 8157 (13445)	EA		1	*	*	*	*		
00006											
P 0	5930-272-1280	SWITCH, LOCK: circuit locking 624597 (12603)	EA		1	*	*	*	*	1	4
00007											
00008		0608 - MISCELLANEOUS ITEMS									
P 0	5306-715-7777	BOLT, SHOULDER: pedal lever 663957 (12603)	EA		1	*	*	*	*		
00009											
P 0	9320-371-6078	BOOT FC927 (63477)	EA		1	*	*	*	*	20	2
00010											
X2 0		BRACKET: deadman switch 317075 (12603)	EA		1					19	2
00011											
X2 0		BUTTON: push deadman switch 777622 (12603)	EA		1					19	3
00012											
P 0	2530-353-2988	CAP: filler FC1205 (63477)	EA		1	*	*	*	*	20	4
00013											
P 0	5935-072-6692	CONNECTOR: battery, locking half, ITA 300 amp, 250 V 765811 (12603)	EA		1	*	*	*	*		
00014											

(1) SMR CODE	(2) FEDERAL STOCK NUMBER	(3) DESCRIPTION	(4) UNIT OF ISSUE	(5) QTY INC IN UNIT PACK	(6) QTY INC IN UNIT	(7) 15-DAY ORGANIZATIONAL MAINTENANCE ALW				(8) ILLUS- TRATION	
						(a)	(b)	(c)	(d)	(a)	(b)
						1-5	6-20	21-50	51-100	FIG NO.	ITEM NO.
P 0 00015	5935-072-6693	CONNECTOR: battery mounting half, ITA 300 amp, 250V 732848 (12603)	EA		1	*	*	*	*		
X2 0 00016		COVER: deadman switch 777624 (12603)	EA		1					19	10
P 0 00017	2530-215-7352	GASKET: filler cap FC2037 (63477)	EA		1	*	*	*	*	20	3
X2 0 00018		GROMMET: wire 303512 (12603)	EA		1						
X2 0 00019		GUIDE: spring 317076 (12603)	EA		1					19	7
X2 0 00020		HINGE: pedal 794293, (12603)	EA		1					19	17
X2 0 00021		MAT: pedal 794274 (12603)	EA		1					19	20
0 00022	5310-031-4530	NUT, PLAIN, HEXAGON: steel, cadmium or zinc coated, No. 6-32, NC 2B	EA		3	*	*	*	*	19	18
0 00023	5310-543-5653	NUT, PLAIN, HEXAGON: steel, cadmium or zinc coated, 3/8 in. 29 NF 23	EA		2	*	*	*	*		
X2 0 00024		PEDAL: accelerator 794272 (12603)	EA		1					19	1
P 0 00025	2530-353-2991	ROD push FC2697 (63477)	EA		1	*	*	*	*	20	1
0 00026	5305-269-2803	SCREW, CAP, HEXAGON HEAD: accelerator pedal stop, steel, cadmium or zinc coated, 3/8 in. 24 NF 2A by 1 in.	EA		1	*	*	*	*		
0 00027	5305-013-1890	SCREW, MACHINE fl-hd, slotted, steel, cadmium or zinc coated, No. 6-32, NC 2A by 3/8 in.	EA		6	*	*	*	*	19	16
0 00028	5305-013-2705	SCREW, MACHINE: rd-hd, slotted, steel, cadmium or zinc coated, No. 6-32, NC 2A b 1/2 in.	EA		2	*	*	*	*	19	14



(1) SMR CODE  INDEX NO.	(2) FEDERAL STOCK NUMBER	(3) DESCRIPTION  REFERENCE NO. & MFR. CODE  USABLE ON CODE		(4) UNIT OF ISSUE	(5) QTY INC IN UNIT PACK	(6) QTY INC IN UNIT	(7) 15-DAY ORGANIZATIONAL MAINTENANCE ALW				(8) ILLUS- TRATION	
							(a)	(b)	(c)	(d)	(a)	(b)
							1-5	6-20	21-50	51-100	FIG NO.	ITEM NO.
P 0 00045	6240-196-4519	LAMP, INCANDESCENT: stoplight, bayonet type 58, 6-8V, 15cp 863722 (12603)		EA		1	*	*	2	2	2	10
P 0 00046	6240-155-8720	LAMP, INCANDESCENT: stoplight, bayonet, 6-8V, 3cp 115570-63 (96906)		EA		1	*	*	2	2	2	11
0 00047	5310-680-5384	NUT, SLOTTED, HEXAGON: steel, cadmium or sine coated, 3/8 in. 24 NF 2B		EA		1	*	*	*	*	2	5
0 00048	5315-816-1794	PIN, COTTER : steel, cadmium or zinc coated, 3/32 in. by 1 in.		EA		1	*	*	*	*		
P 0 00049	5905-978-4711	RESISTOR: headlight 655504 (12603)		EA		1	SEE	GRP	4014			
P 0 00050	5905-978-4720	RESISTOR: stoplight 798853 (12603)		EA		1	SEE	GRP	4014			
P 0 00051	5905-789-7645	RESISTOR: taillight 161317 (12603)		EA		1	SEE	GRP	4014			
X2 0 00052		SPRING: handle pivot bolt, headlight 677741 (12603)		EA		1						
X2 0 00053		SPRING: vertical pivot stud, headlight 677739 (12603)		EA		1						
X2 0 00054		STOPLIGHT-TAILLIGHT, VEHICULAR 1613477 (12603)		EA		1					2	9
0 00055	5340-551-6123	STRAP, RETAINING: headlight tubing 5H4 (12603)		EA		AR	*	*	*	*	2	8
00056		0610 - SENDING UNITS AND WARNING SWITCHES										
P 0 00057	5930-072-9455	SWITCH,- PRESSURE: stoplight 794264 (12603)		EA		1	*	*	*	2	8	11
00058		0611 - HORN AND WIRING										
P 0 00059	2590-072-6694	HORN ASSEMBLY: w/bracket 1613599 (12603)		EA		1	*	*	*	*		
0 00060	5310-543-5653	NUT, PLAIN, HEXAGON: steel, cadmium or zinc coated, 3/8 in. 24 NF 2B		EA		1	*	*	*	*		

(1) SMR CODE  INDEX NO.	(2) FEDERAL STOCK NUMBER	(3) DESCRIPTION  REFERENCE NO. & MFR. CODE  USABLE ON CODE	(4) UNIT OF ISSUE	(5) QTY INC IN UNIT PACK	(6) QTY INC IN UNIT	(7) 15-DAY ORGANIZATIONAL MAINTENANCE ALW				(8) ILLUS- TRATION	
						(a)	(b)	(c)	(d)	(a)	(b)
						1-5	6-20	21-50	51-100	FIG NO.	ITEM NO.
0 00061	5305-269-2893	SCREW, CAP, HEXAGON READ: steel, cadmium or zinc coated 3/8 in. 24 NF 2A by 1 in.	EA		1	*	*	*	*		
0 00062	2530-930-3314	WASHER, FLAT: 3/8 in. 103293 (12603)	EA		1	*	*	*	*		
0 00063	5310-543-2705	WASHER, LOCK: med, steel, cadmium or zinc coated, 3/8 in.	EA		1	*	*	*	*		
00064		0612 - BATTERY AND CABLES									
X2 0 00065		RETAINER: battery, 1h 328287 (12603)	EA		1						
X2 0 00066		RETAINER: -battery, rh 328285 (12603)	EA		1						
X2 0 00067		ROLLER ASSEMBLY: battery 783938 (12603)	EA		5						
0 00068	5305-297-0640	SCREW, CAP, HEXAGON HEAD: steel, cadmium or zinc coated, 3/4 in. 10 NC 2A by 1 1/4 in.	EA		2	*	*	*	*		
0 00069	5305-724-5884	SETSCREW: adjusting stop, headless, hex-socket, cup point, steel, cadmium or zinc coated, 3/8 in. 16 NC 2A by 1/2 in.	EA		2	*	*	*	*		
X2 0 00070		STOP: battery, front 328284 (12603)	EA		1						
X2 0 00071		STOP: side battery retainer adjusting 328289 (12603)	EA		2						
0 00072	5310-809-8533	WASHER: battery stop, 3/4 in.	EA		2	*	*	*	*		
00073		GROUP 10 - FRONT AXLE									
00074		1000 - FRONT AXLE ASSEMBLY									
X2 0. 000075		AXLE END ASSEMBLY: drive 108780 (12603)	EA		2						

(1) SMR CODE  INDEX NO.	(2) FEDERAL STOCK NUMBER	(3) DESCRIPTION  REFERENCE NO. & MFR. CODE  USABLE ON CODE		(4) UNIT OF ISSUE	(5) QTY INC IN UNIT PACK	(6) QTY INC IN UNIT	(7) 15-DAY ORGANIZATIONAL MAINTENANCE ALW				(8) ILLUS- TRATION	
							(a)	(b)	(c)	(d)	(a)	(b)
							1-5	6-20	21-50	51-100	FIG NO.	ITEM NO.
P 0 00076 0	3110-155-6699	BEARING, BALL, ANNULAR: pinion shaft 208W (21335)		EA		2	*	*	*	2	3	19
00077 0	5305-269-3208	SCREW, CAP, HEXAGON HEAD: steel, cadmium or zinc coated, 3/8 in. 16 NC 2A by 5/8 in.		EA		4	*	*	*	*	3	22
00078 0	5310-843-0588	WASHER, FLAT: 3/8 in.		EA		4	*	*	*	*	3	23
P 0 00079 0	2530-164-3568	CAP: hub, drive wheel 104595 (12603)		EA		2	*	*	*	*	3	1
00080 0	5305-269-3209	SCREW, CAP, HEXAGON READ: steel, cadmium or zinc coated, 3/8 in. 16 NC 2A by 3/4 in.		EA		8	*	*	*	*	3	27
00081 0	5310-543-2705	WASHER, LOCK: med, steel, cadmium or zinc coated, 3/8 in.		EA		8	*	*	*	*	3	26
P 0 00082 0	3110-227-4058	CONE AND ROLLERS, TAPERED ROLLER BEARING: hub, inner 3781 (60038)		EA		2	*	*	*	2	3	7
P 0 00083 X2 0 '000	3110-100-0747	CONE AND ROLLERS, TAPERED ROLLER BEARING: hub, outer 2793 (60038) DRUM: brake 107224 (12603)		EA		2	*	*	*	2	3	4
P 0 00085 X2 0 00086 0	2530-708-5262	GASKET: hub cap 107467 (12603) HUB ASSEMBLY 109157 (12603)		EA		2	*	*	*	*	10	11
00087 0	5306-709-2123	BOLT, MACHINE: wheel mtg		EA		10	*	*	*	*	3	12
P 0 00088 0	5306-072-6722	BOLT: ring gear 109769 (12603)		EA		12	*	*	*	*	3	6
P 0 00089 0	3110-100-0376	CUP, TAPERED ROLLER BEARING: hub, inner 3720 (60038)		EA		2	*	*	*	2	3	10
P 0 00090	3110-100-0359	CUP, TAPERED ROLLER BEARING: hub, outer 2720 (60038)		EA		2	*	*	*	2	3	24

(1) SMR CODE	(2) FEDERAL STOCK NUMBER	(3) DESCRIPTION		(4) UNIT OF ISSUE	(5) QTY INC IN UNIT PACK	(6) QTY INC IN UNIT	(7) 15-DAY ORGANIZATIONAL MAINTENANCE ALW				(8) ILLUS- TRATION	
							(a)	(b)	(c)	(d)	(a) FIG NO.	(b) ITEM NO.
P 0 00091	2520-072-6721	GEAR: ring 108829 (12603)		EA		2	*	*	*	*	3	11
P 0 00092	5310-383-4677	NUT, SLOTTED. HEXAGON: spindle bearing, adjusting, steel, cadmium or zinc coated, 1 in. 14 NF 2B 100575 (12603)		EA		2	*	*	*	*	3	2
0 00093	5315-013-7214	PIN, COTTER: steel, cadmium or sine coated, 1/8 in. by 1 3/4 in.		EA		2	*	*	*	*	3	25
P 0 00094	5310-512-2082	WASHER, FLIT 101158 (12603)		EA		2	*	*	*	*	3	3
P 0 00095	5340-072-6729	RING, RETAINING bearing 659764 (12603)		EA		2	*	*	*	*	3	20
P 0 00096	5330-733-2992	SEAL: oil, pinion shaft 107198 (12603)		EA		2	*	*	2	2	3	21
P 0 00097	5330-876-9494	SEAL: oil, ring gar 110222 (12603)		EA		2	*	*	2	2	3	17
P 0 00098	2520-876-2781	SHAFT: pinion drive 107218 (12603)		EA		2	*	*	*	*	3	18
X2 0 00099	2520-072-6723	SPINDLE: hub 107219 (12603)		EA		2					3	8
P 0 00100	5306-072-6724	BOLT: spindle 106546 (12603)		EA		12	*	*	*	*	3	9
P 0 00101	5310-843-0647	WASHER, LOCK 1067 (12603)		EA		12	*	*	*	*		
X2 0 00102		SUPPORT: spindle 881558 (12603)		EA		2					3	13
P 0 00103	2520-072-6732	VENT 110381 (12603)		EA		2	*	*	*	*		

(1) SMR CODE	(2) FEDERAL STOCK NUMBER	(3) DESCRIPTION		(4) UNIT OF ISSUE	(5) QTY INC IN UNIT PACK	(6) QTY INC IN UNIT	(7) 15-DAY ORGANIZATIONAL MAINTENANCE ALW				(8) ILLUS- TRATION	
							(a)	(b)	(c)	(d)	(a) FIG NO.	(b) ITEM NO.
INDEX NO.	REFERENCE NO. & MFR. CODE	USABLE ON CODE										
00104 P 0	2520-839-1055	1002 - .DIFFERENTIAL BREATHER: axle adapter 104942 (12603)	EA		1	*	*	*	*			
00105 P 0	4730-359-3872	PLUG, MAGNETIC: drain 704518 (12603)	EA		1	*	*	*	*	4	3	
00106 P 0	4730-2783356	PLUG, PIPE filler, steel, sq-hd, 2 in. PT	EA		1	*	*	*	*	4	1	
00107 P 0	4730-289-5176	PLUG, PIPE: oil level, sq-hd, malleable iron, 1/2 in. NPT 219199 (24617)	EA		1	*	*	*	*	4	2	
00108 00109 00110 0		GROUP 11 - REAR A 1104 - STEERING MECHANISM										
0	4730-172-0028	FITTING, LUBRICATION: knuckles, 1/8 in. 27 MPF, 45 deg	EA		4	*	*	*	*	5	12	
0	4730-050-4208	FITTING, LUBRICATION: steering arm, straight, 1/8 in. 27	EA		1	*	*	*	*			
00112 P 0	2530-073-2162	TIE ROD ASSEMBLY: steering 107171 (12603)	EA		2	SEE	GRP	1401				
00113 00114 00115 P 0		GROUP 12 - BRAKES 1201 - HAND BRAKE										
P 0	5306-316-4809	BOLT, EYE: spring tension 637793 (12603)	EA		1	*	*	*	*	6	14	
00116 0	5310-584-5007	NUT, PLAIN, HEXAGON: jam, steel, cadmium or zinc coated, 3/8 in. 16 PC 2B	EA		2	*	*	*	*	6	13	
00117 P 0	5340-359-2853	CLEVIS, ROD END adjusting 613475 (12603)	EA EA		2 2	*	*	*	*	6 6	4	
00118 0	5310-543-5973	NUT, PLAIN, HEXAGON: jam, steel, cadmium or sine coated, 3/8 in. 24 NF 2B	EA		1	*	*	*	*	6	7	
00119 P 0	5340-285-1360	CLEVIS: rod ends, control rod 2J6208 (12603)	EA EA		2	*	*	*	*	6 6	9	



(1) SMR CODE  INDEX NO.	(2) FEDERAL STOCK NUMBER	(3) DESCRIPTION  REFERENCE NO. & MFR. CODE  USABLE ON CODE		(4) UNIT OF ISSUE	(5) QTY INC IN UNIT PACK	(6) QTY INC IN UNIT	(7) 15-DAY ORGANIZATIONAL MAINTENANCE ALW				(8) ILLUS- TRATION	
							(a)	(b)	(c)	(d)	(a)	(b)
							1-5	6-20	21-50	51-100	FIG NO.	ITEM NO.
0 00121	5310-543-5973	NUT, PLAIN, HEXAGON: jam, steel, cadmium or zinc coated, 3/8 in. 24 NF 2B		EA		2	*	*	*	*	6	10
0 00122	5315-842-3044	PIN, COTTER: steel, cadmium or zinc coated, 3/32 in. by 5/8 in.		EA		2	*	*	*	*		
0 00123	5315-815-8840	PIN, STRAIGHT, HEADED: steel, cyanide hardened, cadmium or zinc coated, 3/8 in. by 15A6 in. by 13/32 in.		EA		2	*	*	*	*		
P 0 00124	2530-072-9463	HANDLE ASSEMBLY: hand brake 392008 (12603)		EA		1	*	*	*	*	6	16
X2 0 00125		BUMPER, RUBBER: handle 391415 (12603)		EA		1					6	17
X2 0 00126		KNOB: handle 882907 (12603)		EA		1					6	18
X2 0 00127		LINK: handle to clevis 334432 (12603)		EA		2					6	5
0 00128	5315-842-3044	PIN, COTTER: steel, cadmium or zinc coated, 3/32 in. by 5/8 in.		EA		4	*	*	*	*	6	3
0 00129	5315-815-8840	PIN, STRAIGHT HEADED: steel, cyanide hardened, cadmium or zinc coated, 3/8 in. by 15/16 in. by 1 3/32 in.		EA		4	*	*	*	*	6	6
X2 0 00130		PIN: lock, upper 732655 (12603)		EA		1					6	1
12 0 00131		ROD: control 332301 (12603)		EA		1					6	11
P 0 00132	2520-230-3726	SPRING, HELICAL, EXTENSION: lever arm 641929 (12603)		EA		1	*	*	*	*	6	15
P 0 00133	5930-886-9998	SWITCH: power cut off 4803 (91929)		EA		1	SEE	GRP	4012			
X2 0 00134		YOKE: clevis rod end to lever arm 390478 (12603)		EA		1					6	8
0 00135	5315-842-3044	PIN, COTTER: steel, cadmium or zinc coated, 3/32 in. by 5/8 in.		EA		1	*	*	*	*		
0 00136	5315-815-8840	PIN, STRAIGHT HEADED: steel, cyanide hardened, cadmium or zinc coated, 3/8 in. by 15/16 in. by 1 3/32 in.		EA		1	*	*	*	*		

(1) SMR CODE  INDEX NO.	(2) FEDERAL STOCK NUMBER	(3) DESCRIPTION  REFERENCE NO. & MFR. CODE  USABLE ON CODE		(4) UNIT OF ISSUE	(5) QTY INC IN UNIT PACK	(6) QTY INC IN UNIT	(7) 15-DAY ORGANIZATIONAL MAINTENANCE ALW				(8) ILLUS- TRATION	
							(a) FIG NO.	(b) FIG NO.	(c) FIG NO.	(d) FIG NO.	(a) FIG NO.	(b) ITEM NO.
P 0 00137		YOKE: clevis rod end to lock pin 732828 (12603)		EA		1					6	2
00138		1202 - SERVICE BRAKE.										
X2 0 00139		ARM: adjusting 107312 (12603)		EA		2					7	12
0 00140		BOLT: arm 107334 (12603)		EA		2	*	*	*	*	7	5
0 00141	5310-680-5384	NUT, SLOTTED, HEXAGON: steel, cadmium, or zinc coated, 3/8 in. 24 NF 2B		EA		2	*	*	*	*	7	13
X2 0 00142		PIN, SPRING: arm nut 664131 (12603)		EA		2					7	14
X2 0 00143		WASHER, FLAT: arm 107313 (12603)		EA		2					7	7
X2 0 00144		WASHER: index, arm 107403 (12603)		EA		4					7	11
X2 0 00145		WASHER: index, arm 107403 (12603)		EA		2					7	6
X2 0 00146		WASHER, WAVE: arm 107315 (12603)		EA		2					7	17
0 00147	5306-298-1414	BLOCK: anchor 107324 (12603)		EA		4	*	*	*	*	7	9
P 0 00148	5310-012-0383	BOLT, MACHINE: anchor block		EA		4	*	*	*	*	7	10
P 0 R 00149	2530-976-3331	BRAKE SHOE, INTERNALLY ACTUATED 107317 (12603)		EA		2	*	*	2	2	7	16
P 0 00150	2530-072-6738	CUP: spring retainer 107330 (12603)		EA		8	*	*	*	*	7	20
X2 0 00151		KEY: shoe anchor 107325 (12603)		EA		4					7	18



(1) SMR CODE INDEX NO.	(2) FEDERAL STOCK NUMBER	(3) DESCRIPTION  REFERENCE NO. & MFR CODE  USABLE ON CODE		(4) UNIT OF ISSUE	(5) QTY INC IN UNIT PACK	(6) QTY INC IN UNIT	(7) 15 DAY ORGANIZATIONAL MAINTENANCE ALW				(8) ILLUS- TRATION	
							(a)	(b)	(c)	(d)	(a)	(b)
							1-5	6-20	21-50	51-100	FIG NO.	ITEM NO.
P 0 00167 0	2530-343-8161	CAP: filler C12103 (63477)		EA		1	*	*	*	*	8	1
00168 P 0	5310-543-5653	NUT, PLAIN, HEXAGON steel, cadmium or zinc coated, 3/8 in. 24 NF 2B.		EA		3	*	*	*	*		
00169 P 0	2530-164-1935	PUSH ROD, HYDRAULIC BRAKE MASTER CYLINDER FC2928 (63477)		EA		1	*	*	*	*	8	5
00170 P 0	5340-353-2994	RING, RETAINING: bellows, large FC2931 (63477)		EA		1	*	*	*	*	8	3
00171 0	5340-282-0060	RING, RETAINING: bellow, small 10939 (63477)		EA		1	*	*	*	*	8	4
00172 0	5305-269-2805	SCREW, CAP, HEXAGON HEAD: steel, cadmium		EA		3	*	*	*	*		
00173 P 0	5310-543-2705	WASHER, LOCK: med, steel, cadmium or zinc coated, 3/8 in.		EA		3	*	*	*	*		
00174 P 0 R	5330-291-6658	WASHER, NONMETALLIC: filler cap FC6019 (63477)		EA		1	*	*	*	*	8	2
00175 0	2530-876-9629	CYLINDER ASSEMBLY, HYDRAULIC BRAKE, WHEEL FD22902 (63477)		EA		2	*	*	*	*		
00176 0	5305-559-9202	SCREW, CAP, HEXAGON HEAD: steel, cadmium or zinc coated, 1/4 in. 20 NC 2A by 1/2 in		EA		4	*	*	*	*	7	3
00177 0	5310-012-0380	WASHER, LOCK: Bed, steel, cadmium or zinc coated, 1/4 in.		EA		4	*	*	*	*	7	2
00178 P 0	4730-172-0034	FITTING, LUBRICATION: brake pedal pin, 1/8 in. NPTF, 90 deg		EA		1	*	*	*	*	9	7
00179 P 0	5330-737-2312	GASKET: inlet connector, wheel cylinder 61534 (12603)		EA		4	*	*	*	*		
00180 P 0	2530-466-8624	GASKET: outlet connector, master cylinder 613750 (12603)		EA		1	*	*	*	*	8	7
00181	4720-072-9456	HOSE ASSEMBLY, RUBBER: master cylinder to tee 76129 (15603)		EA		1	*	*	*	*		

(1) SMR CODE INDEX NO.	(2) FEDERAL STOCK NUMBER	(3) DESCRIPTION  REFERENCE NO. & MFR CODE  USABLE ON CODE		(4) UNIT OF ISSUE	(5) QTY INC IN UNIT PACK	(6) QTY INC IN UNIT	(7) 15 DAY ORGANIZATIONAL MAINTENANCE ALW				(8) ILLUS- TRATION		
							(a)	(b)	(c)	(d)	(a)	(b)	
							1-5	6-20	21-50	51-100	FIG NO.	ITEM NO.	
X2 0 00182	2530-311-9662	LINE/ASSEMBLY: tee to left brake 759058 (12603)		EA		1							
X2 0 00183		LINE ASSEMBLY: tee to right brake 759097 (12603)		EA		1							
X2 0 00184		TEE: hydraulic brake lines 761422 (12603)		EA		1							
P 0 00185		WASHER, FLAT: outlet bolt, master cylinder line 620238 (12603)		EA		1	*	*	*	*	8	9	
00186		1206 - MECHANICAL BRAKE SYSTEM											
X2 0 00187		ARM: returning spring 763755 (12603)		EA		1							
X2 0 00188		BRACKET: brake actuating switch 746899 (12603)		EA		1					9	12	
P 0 00189		2540-776-2844	PAD: brake pedal 666991 (12603)		EA		1	*	*	*	2	9	1
0 00190		5310-012-0377	NUT, PLAIN, HEXAGON: steel, cadmium or zinc coated, 3/8 in. 16 NC 2A		EA		1	*	*	*	*	9	3
0 00191		5310-543-2705	WASHER, LOCK: med, steel, cadmium or zinc coated, 3/8 in.		EA		1	*	*	*	*	9	2
P 0 00192	3930-209-7777	SPRING: return, brake pedal 609942 (12603)		EA		1	*	*	*	*	9	4	
P 0 00193	5930-887-0000	SWITCH: brake BA3ST (91929)		EA		1	SEE	GRP	4012				
X2 0 00194	5310-720-8536	YOKE: pedal adjusting 664901 (12603)		EA		1					9	8	
0 00195		NUT, PLAIN, HEXAGON: jam, steel, cadmium or zinc coated, 7/16 in. 20 NF 2B		EA		2	*	*	*	*	9	11	
0 00196		5315-816-1794	PIN, COTTER: steel, cadmium or zinc coated, 3/32 in. by 1 in.		EA		1	*	*	*	*	9	5

(1) SMR CODE INDEX NO.	(2) FEDERAL STOCK NUMBER	(3) DESCRIPTION REFERENCE NO. & MFR CODE USABLE ON CODE		(4) UNIT OF ISSUE	(5) QTY INC IN UNIT PACK	(6) QTY INC IN UNIT	(7) 15 DAY ORGANIZATIONAL MAINTENANCE ALW				(8) ILLUS- TRATION	
							(a)	(b)	(c)	(d)	(a)	(b)
							1-5	6-20	21-50	51-100	FIG NO.	ITEM NO.
X2 0 00197	2805-493-8110	PIN, STRAIGHT, HEADED: yoke 4F07115 (12603)		EA		1					9	6
X2 0 00198		STUD: master cylinder to yoke 648521 (12603.)		EA		1					9	10
P 0 00199		WASHER, FLAT: yoke 619025 (12603)		EA		1	*	*	*	*		9
00200 00201		GROUP 13 -WHEELS 1311 - WHEEL ASSEMBLY										
P 0 00202	2530-164-3568	CAP: hub, steer wheel 104595 (12603)		EA		2	*	*	*	*	10	4
0 00203	5305-285-5170	SCREW, CAP, HEXAGON HEAD: steel, cadmium or zinc coated, 3/8 in. 16 NC 2A by 3/4 in.		EA		8	*	*	*	*	10	2
0 00204	5310-012-0381	WASHER, LOCK: light, steel, cadmium or zinc coated, 3/8 in.		EA		8	*	*	*	*	10	3
P 0 00205	3110-100-3553	CONE AND ROLLERS, TAPERED ROLLER BEARING: hub, inner, steering wheel 26882 (60038)		EA		2	*	*	*	2	10	9
P 0 00206	3110-198-2169	CONE AND ROLLERS, TAPERED ROLLER BEARING: outer steering 15123 (60038)		EA		2	*	*	*	2	10	5
X2 0 00207		HUB AND CUP ASSEMBLY: steering wheels 107237 (12603)		EA		2					10	7
4 P 0 00208	3110-100-0556	CUP, TAPERED ROLLER BEARING: hub, inner 26822 (60038)		EA		2	*	*	*	2	10	8
P 0 00209	3110-198-2170	CUP, TAPERED ROLLER BEARING: hub, outer 15245 (60038)		EA		2	*	*	*	2	10	6
P 0 00210	5310-383-4677	NUT, SLOTTED, HEXAGON: wheel adjusting, steel, cadmium or zinc coated, 1 in. 14 NF 2B 100575 (12603)		EA		2	2	*	*	*	5	10
0 00211	5315-298-180	PIN, COTTER: steel, cadmium or zinc coated, A 1/8 in by 1 3/4 in.		EA		2	*	*	*	*	5	11



(1) SMR CODE INDEX NO.	(2) FEDERAL STOCK NUMBER	(3) DESCRIPTION  REFERENCE NO. & MFR CODE  USABLE ON CODE		(4) UNIT OF ISSUE	(5) QTY INC IN UNIT PACK	(6) QTY INC IN UNIT	(7) 15 DAY ORGANIZATIONAL MAINTENANCE ALW				(8) ILLUS- TRATION	
							(a)	(b)	(c)	(d)	(a)	(b)
							1-5	6-20	21-50	51-100	FIG NO.	ITEM NO.
P 0 00228	2530-311-9644	SEAT: ball socket, front tie rod 604405 (12603)		EA		2	*	*	*	*	11	21
P 0 00229	2530-164-3338	SOCKET: adjusting, front tie rod 16SA205 (59875)		EA		1	*	*	*	*	11	18
P 0 00230	2530-359-1529	TIE ROD END: lh 103406 (12603)		EA		1	*	*	*	*	11	13
X2 0 00231		COVER: tie rod end 111563 (12603)		EA		1					11	12
P 0 00232	5310-359-1665	NUT, SLOTTED, HEXAGON 100857 (12603)		EA		1	*	*	*	*	11	10
0 00233	5315-839-5822	PIN, COTTER: steel, cadmium or zinc coated, 1/8 in. by 1 in.		EA		1	*	*	*	*	11	11
X2 0 00234		TIE ROD: front 766543 (12603)		EA		1					11	15
X2 0 00235		TIE ROD ASSEMBLY: rear 335549 (12603)		EA		1						
P 0 00236	5310-073-2161	NUT: tie rod lh thread 107419 (126035)		EA		1	*	*	*	*	11	6
P 0 00237	5310-073-2153	NUT: tie rod, rh thread 107418 (12603)		EA		1	*	*	*	*	1	8
P 0 00238	2530-359-1529	TIE ROD END: lh 103046 (12603)		EA		1	*	*	*	*	11	9
P 0 00239	2520-359-1528	TIE ROD END: rh 103405 (12603)		EA		1	*	*	*	*	11	7
X2 0 00240		COVER: tie rod end 111563 (12603)		EA		2					11	4
0 00241	5310-359-1665	NUT, SLOTTED, HEXAGON		EA		2	*	*	*	*	11	3
0 00242	5315-839-5822	PIN, COTTER: .steel, cadmium or zinc coated, 1/8 in. by 1 in.		EA		2	*	*	*	*	11	2
X2 0 00243		TIE ROD: rear 766545 (12603)		EA		1					11	5



(1) SMR CODE INDEX NO.	(2) FEDERAL STOCK NUMBER	(3) DESCRIPTION  REFERENCE NO. & MFR CODE  USABLE ON CODE		(4) UNIT OF ISSUE	(5) QTY INC IN UNIT PACK	(6) QTY INC IN UNIT	(7) 15 DAY ORGANIZATIONAL MAINTENANCE ALW				(8) ILLUS- TRATION	
							(a)	(b)	(c)	(d)	(a)	(b)
							1-5	6-20	21-50	51-100	FIG NO.	ITEM NO.
P 0 00244	2530-073-2162	TIE ROD ASSEMBLY: steering 107171 (12603)		EA		2	*	*	*	*	5	9
P 0 00245	5310-073-2161	NUT: tie rod lh thread 107419 (12603)		EA		2	*	*	*	*	5	6
P 0 00246	5310-073-2153	NUT: tie rod rh thread 107418 (126035)		EA		2	*	*	*	*	5	7
P 0 00247	2530-359-1529	TIE ROD END lh 103406 (12603)		EA		2	*	*	*	*	5	8
P 0 00248	2520-359-1528	TIE ROD END: rh 103405 (12603)		EA		2	*	*	*	*	5	5
X2 0 00249		COVER, BALL: tie rod end 111563 (12603).		EA		4					5	4
0 00250	5310-359-1665	NUT, SLOTTED, HEXAGON		EA		4	*	*	*	*	5	1
0 00251	5315-013-7185	PIN, COTTER: steel, cadmium or zinc coated, 1/8 in. by 1 in.		EA		4	*	*	*	*	5	2
P 0 00252	2530-073-2152	TIE ROD: steering 107172 (12603)		EA		1	*	*	*	*	5	3
P 0 00253	2530-375-0751	WASHER, THRUST: idler arm 103951 (12603)		EA		2	*	*	*	*		
00254		1411 - HOSES, LINES, FITTINGS										
X2 0 00255		ADAPTER: hydraulic pump flange to steering pump line 662458 (12603)		EA		1					13	2
X2 0 00256		BUSHING, REDUCER: steering pump, 1/2 in. to 3/8 in. 97F6 (12603)		EA		1						
X2 0 00257		ELBOW, PIPE TO TUBE: steering pump, 1/2 in. tube by 3/8 NPTF 84F6 (12603)		EA		1						
X2 0 00258		ELBOW: steering valve 17K5 (12603)		EA		1						

(1) SMR CODE INDEX NO.	(2) FEDERAL STOCK NUMBER	(3) DESCRIPTION REFERENCE NO. & MFR CODE USABLE ON CODE		(4) UNIT OF ISSUE	(5) QTY INC IN UNIT PACK	(6) QTY INC IN UNIT	(7) 15 DAY ORGANIZATIONAL MAINTENANCE ALW				(8) ILLUS- TRATION		
							(a)	(b)	(c)	(d)	(a) FIG NO.	(b) ITEM NO.	
							1-5	6-20	21-50	51-100			
X2 0 00259	4730-050-4647	ELBOW: steering valve 666853 (12603)		EA		1							
P 0 00260		ELBOW: steering valve 672942 (12603)		EA		1	*	*	*	*			
P 0 00261	4730-052-3972	ELBOW: steering valve, 3/8 in. tube by 9/16 in. 18, 45 deg 18K5 (12603)		EA		1	*	*	*	*			
X2 0 00262	3930-733-9730	HOSE ASSEMBLY, RUBBER: steering pump to steering valve 657652 (12603)		EA		1	*	*	*	*			
P 0 00263		HOSE ASSEMBLY, RUBBER: steering valve to steering cylinder 672258 (12603)		EA		2							
M 0 00264		HOSE, RUBBER steering valve to carbon pile, 5/8 in. id by 7/8 in. od 152540-48 (00624)		EA		1							
P 0 00265		4720-204-1784	MANUFACTURE FROM: HOSE RUBBER (3 ft. 5-1/2 in. required)		FT			SEE	GRP	9501			
X2 0 00266	5330-582-2855	CLAMP: hose 78652 (12603)		EA		2							
X2 0 00267		LINE ASSEMBLY: steering valve to steering cylinder 798402 (12603)		EA		1							
X2 0 00268		LINE ASSEMBLY: steering valve to steering cylinder 798403 (12603)		EA		1							
X2 0 00269		LINE ASSEMBLY: tank to steering pump, front 798392 (12603)		EA		1							
X2 0 00270		LINE ASSEMBLY: tank to steering pump, rear 798393 (12603)		EA		1							
P 0 00271		4730-375-1499	PACKING, PREFORMED: union adapter MS2B775-11-3 (96906)		EA		1	*	*	*	*		
P 0 00272		UNION: adapter, steering valve 690099 (12603)		EA		1	*	*	*	*			

(1) SMR CODE INDEX NO.	(2) FEDERAL STOCK NUMBER	(3) DESCRIPTION REFERENCE NO. & MFR CODE USABLE ON CODE		(4) UNIT OF ISSUE	(5) QTY INC IN UNIT PACK	(6) QTY INC IN UNIT	(7) 15 DAY ORGANIZATIONAL MAINTENANCE ALW				(8) ILLUS- TRATION	
							(a)	(b)	(c)	(d)	(a) FIG NO.	(b) ITEM NO.
							1-5	6-20	21-50	51-100		
00273		GROUP 18 - BODY, CAB, HOOD										
00274		1801 - BODY, CAB, HOOD ASSEMBLIES										
P 0	5340-164-3063	CLAMP: battery, discharge indicator		EA		1	*	*	*	*		
00275		857408 (80659)										
0	5310-012-0614	NUT, PLAIN, HEXAGON: steel, cadmium or zinc coated, No. 10-32 NF 28		EA		4	*	*	*	*		
00276												
0	5310-527-3288	WASHER, LOCK: toothed, int-tooth, steel, cadmium or zinc coated, No. 10		EA		2	*	*	*	*		
00277												
X2 0		COVER: dash instrument panel		EA		1					1	5
00278		751683 (12603)										
X2 0		GUARD: overhead		EA		1						
00279		794237 (12603)										
X2 0		BUSHING: guard socket		EA		2						
00280		675760 (12603)										
0	5310-763-8905	NUT, PLAIN, HEXAGON: cowl to frame, side, steel, cadmium or zinc coated, 5/8 in. 18 NF 2B		EA		2	*	*	*	*		
00281												
0	5310-012-4944	NUT, PLAIN, HEXAGON: jam, steel, cadmium or zinc coated, 5/8 in. 18 NF 2B		EA		2	*	*	*	*		
00282												
0	5310-754-2006	NUT, PLAIN, HEXAGON: steel, cadmium or zinc coated, 3/4 in. 16 NF 2B		EA		1	*	*	*	*		
00283												
0	5310-255-6408	NUT, SELF-LOCKING: indented, triangular types, 5/8 in. 18 NC 2B		EA		2	*	*	*	*		
00284												
X2 0		PANEL ASSEMBLY: lower dash		EA		1						
00285		766526 (12603)										
X2 0		PLATE: cover steering gear filler		EA		1						
00286		732683 (12603).										
X2 0		PLATE: instrument panel		EA		1						
00287		794258 (12603)										
X2 0		PLATE: valve, switch cover		EA		1						
00288		1610649 (12603)										

(1) SMR CODE INDEX NO.	(2) FEDERAL STOCK NUMBER	(3) DESCRIPTION REFERENCE NO. & MFR CODE USABLE ON CODE		(4) UNIT OF ISSUE	(5) QTY INC IN UNIT PACK	(6) QTY INC IN UNIT	(7) 15 DAY ORGANIZATIONAL MAINTENANCE ALW				(8) ILLUS- TRATION	
							(a)	(b)	(c)	(d)	(a)	(b)
							1-5	6-20	21-50	51-100	FIG NO.	ITEM NO.
X2 0 00289 0	5305-761-4227	RING,. RETAINING: bushing 710779 (12603)		EA		2						
00290 0	5305-725-4098	SCREW, CAP, HEXAGON HEAD: cowl frame, front, steel, cadmium or zinc coated, 1/2 in. 20 NF 2A by 1 1/4 in.		EA		4	*	*	*	*		
00291 0	5305-267-8972	SCREW, CAP, HEXAGON HEAD: cowl to frame, side, steel, cadmium or zinc coated, 5/8 in. 18 NF 2A by 1 1/4 in.		EA		2	*	*	*	*		
00292 0	5305-573-5628	SCREW, CAP, HEXAGON HEAD: lower dash panel to cowl bracket, steel, cadmium or zinc coated, 1/4 in. 28 NF 2A by 3/8 in.		EA		2	*	*	*	*		
00293 0	5305-267-8972	SCREW, CAP, HEXAGON HEAD: steel, cadmium or zinc coated, 5/8 in. 18 NC 2A by 1 7/8 in.		EA		2	*	*	*	*		
00294 0	5305-018-1561	SCREW, CAP, HEXAGON HEAD: steel, cadmium or zinc coated, 1/4 in. 28 N 2A by 3/8 in.		EA		5	*	*	*	*		
00295 0	5305-269-3229	SCREW, CAP, HEXAGON HEAD: steel, cadmium or zinc coated, 1/4 in. 28 6 W 2A by 1/2 in.		EA		1	*	*	*	*		
00296 0	5305-576-7116	SCREW, CAP, HEXAGON HEAD: steel, cadmium or zinc coated, 3/8 in. 24 NF 2A by 3/8 in.		EA		4	*	*	*	*		
00297 0	5305-274-2566	SCREW, CAP, HEXAGON HEAD: steel, cadmium or zinc coated, 3/4 in. 16 W 2A by 2 1/4 in.		EA		1	*	*	*	*		
00298 0	5305-274-2566	SCREW, CAP, HEXAGON SOCKET HAD: steel, 5/8 in. 18 NF 2A by 2 in.		EA		2	*	*	*	*		
00299 0	5305-983-8082	SCREW, CAP, HEXAGON SOCKET HEAD: steel, 5/8 in. 18 NF 2A by 2 1/2 in.		EA		4	*	*	*	*		
00300 X2 0	5340-349-0919	SPACER, RING: cowl to frame, front		EA		4	*	*	*	*		
00301 X2 0		SPRING: socket 677565 (12603)		EA		2						
00302 X2 0		SUPPORT ASSEMBLY: cowl and steering column 399335 (12603)		EA		1						
00303		SUPPORT: steering gear, brake and cowl 738551 (12603)		EA		1						



(1) SMR CODE INDEX NO.	(2) FEDERAL STOCK NUMBER	(3) DESCRIPTION REFERENCE NO. & MFR CODE USABLE ON CODE		(4) UNIT OF ISSUE	(5) QTY INC IN UNIT PACK	(6) QTY INC IN UNIT	(7) 15 DAY ORGANIZATIONAL MAINTENANCE ALW				(8) ILLUS- TRATION	
							(a)	(b)	(c)	(d)	(a)	(b)
							1-5	6-20	21-50	51-100	FIG NO.	ITEM NO.
0 00321	5310-905-4600	NUT, PLAIN, HEXAGON: jam, steel, cadmium or zinc coated, 5/16 in. 24 NC 2B		EA		4	*	*	*	*	12	8
0 00322	5310012-0376	NUT, PLAIN, HEXAGON: steel, cadmium or zinc coated, 5/16 in. 18 NC 2A		EA		4	*	*	*	*	12	12
0 00323	5310050-3377	NUT, SELF-LOCKING, HEXAGON: steel, cadmium or zinc coated, 1/4 in. 28 NF38		EA		2	*	*	*	*	12	6
X2 0 00324		RING, RETAINING: support shaft 732736 (12603)		EA		1						
X2 0 00325		SCREW, CAP, SOCKET HEAD: fl countersunk head hex socket, alloy steel, 5/6 in. 18 NF 2A by 5/8 in.		EA		4					12	13
0 00326	5305-022-6454	SCREW, MACHINE: fl-hd, slotted, steel, cadmium or zinc coated, 1/4 in. 28 NF 2A by 1 1/2 in		EA		2	*	*	*	*	12	2
0 00327	5305-012-0351	SCREW, TAPPING, THREAD CUTTING: rd-hd, slotted, cadmium or zinc coated, No. 10 by 3/4 in.		EA		4	*	*	*	*	12	7
X2 0 00328		SPACER: back rest to frame bolt 66380 (12603)		EA		2					12	4
0 00329	5310-012-0214	WASHER, LOCK: med, steel, cadmium or zinc coated, 5/16 in.		EA		4	*	*	*	*	12	11
0 00330	5310-012-0214	WASHER, LOCK: med, steel, cadmium or zinc coated, 5/16 in.		EA		4	*	*	*	*	12	9
00331		GROUP 24 - HYDRAULIC LIFT COMPONENTS										
00332		2401 - HYDRAULIC PUMP										
X2 0 00333		COUPLING: flexible 725141 (12603)		EA		1					13	5
2-0 00334		FLANGE: pump inlet 796161 (12603)		EA		1					13	3
P 0 00335	5330-676843	GASKET: flange, pump inlet 665209 (12603)		EA		1	*	*	*	*		



(1) SMR CODE INDEX NO.	(2) FEDERAL STOCK NUMBER	(3) DESCRIPTION  REFERENCE NO. & MFR CODE  USABLE ON CODE		(4) UNIT OF ISSUE	(5) QTY INC IN UNIT PACK	(6) QTY INC IN UNIT	(7) 15 DAY ORGANIZATIONAL MAINTENANCE ALW				(8) ILLUS- TRATION	
							(a)	(b)	(c)	(d)	(a) FIG NO.	(b) ITEM NO.
							1-5	6-20	21-50	51-100		
X2 0 00351 0	5315-043-1782	PIN: rear pivot 1613522 (12603)		EA		2						
00352 0		PIN, COTTER: steel, cadmium or zinc coated, 3/16 in. by 2 3/4 in.		EA		2	*	*	*	*		
00353 0	5305-725-4187	SCREW, CAP, HEXAGON HEAD: steel, cadmium or zinc coated, 1/2 in. 20 NF 2A by 1 3/4 in.		EA		2	*	*	*	*	14	3
00354 00355	5310-584-5272	WASHER, LOCK: med, steel, cadmium or zinc coated, 1/2 in. EA		EA		2	*	*	*	*	14	2
X2 0 00356			2405 - HYDRAULIC MAST COLUMN ANCHOR: chain, cylinder end 734635 (12603)		EA		2					
X2 0 00357		ANCHOR: chain fork plate end 665755 (12603)		EA		2						
X2 0 00358		BACK REST: load 762166 (12603)		EA		1					16	1
X2 0 00359 0	4730-00-4203	CHAIN: lift 666339 (12603)		EA		AR						
00360 X2 0			FITTING, LUBRICATION: upright support		EA		2	*	*	*	*	15
00361 P 0	3930-937-3729	FORK: lift 752044 (12603)		EA		2					16	6
00362 X2 0 00363	3930-674-2908	LEVER: lift fork stop pin 756446 (12603)		EA		2	*	*	*	*	16	3
P 0			PIN, SPRING: stop lever 654618 (12603)		EA		2					16
00364 X2 0 00365	3930-699-9435	LINK: connecting, lift chain 616659 (12603)		EA		4	*	*	*	*		
		LINK: offset, lift chain 641863 (126035)		EA		4						



(1) SMR CODE INDEX NO.	(2) FEDERAL STOCK NUMBER	(3) DESCRIPTION  REFERENCE NO. & MFR CODE  USABLE ON CODE		(4) UNIT OF ISSUE	(5) QTY INC IN UNIT PACK	(6) QTY INC IN UNIT	(7) 15 DAY ORGANIZATIONAL MAINTENANCE ALW				(8) ILLUS- TRATION	
							(a)	(b)	(c)	(d)	(a)	(b)
							1-5	6-20	21-50	51-100	FIG NO.	ITEM NO.
X2 0 00366	5315-674-9484	PAD: stop block 342951 (12603)		EA		2					15	3
P 0 00367 0		PIN: stop lift fork 756447 (12603)		EA		2	*	*	*	*	16	5
00368 X2 0 00369	5305-269-2805	SCREW, CAP, HEXAGON HEAD: steel, cadmium or zinc coated, 3/8 in. 24 NF 2A by 1 1/4 in.		EA		2	*	*	*	*	15	1
		SCREW, CAP, SOCKET HEAD: fl-countersunk hd w/hex-socket, alloy steel, 3/8 in. 24 NF 3A by 1 in.		EA		4					15	6
		I0G616J (12603)		EA		AR					15	4
X2 0 00370	5340-674-9843	SHIM: stop pad 343983 (12603)		EA		2	*	*	*	*	16	4
P 0 00371		SPRING: pin, lift fork-stop 756991 (12603)		EA		1					15	8
X2 0 00372		STOP: safety, lh 338984 (12603)		EA		1					15	5
X2 0 00373 0	5310-833-3340	STOP: safety, rh 343740.(12603)		EA		1					15	2
00374 0	5310-013-8617	WASHER, FLAT: 3/8 in.		EA		4	*	*	*	*	15	7
00375 00376		WASHER, LOCK: ext-tooth, countersunk, steel, cadmium or zinc coated, 3/8 in.		EA		4	*	*	*	*	15	
X2 0 00377		2406 - HYDRAULIC LINES AND FITTINGS ADAPTER: w/packing, control valve 15K7 (12603)		EA		1						
P 0 00378	5330-064-7777	PACKING, PREFORMED: control valve adapter 674905 (12603)		EA		1	*	*	*	2		
P 0 00379	3930-806-0007	BREATHER: filter, oil tank 674905 (12603)		EA		1	*	*	*	*		
X2 0 00380		CAP, PIPE: oil tank, galv., 1/2 in. NPTF 22F4G (12603)		EA		1						
X2 0 00381		CLAMP, LOOP: control valve to lift cylinder line, type "A" 5/8 in. 6H16G (12603)		EA		1						

(1) SMR CODE INDEX NO.	(2) FEDERAL STOCK NUMBER	(3) DESCRIPTION  REFERENCE NO. & MFR CODE  USABLE ON CODE		(4) UNIT OF ISSUE	(5) QTY INC IN UNIT PACK	(6) QTY INC IN UNIT	(7) 15 DAY ORGANIZATIONAL MAINTENANCE ALW				(8) ILLUS- TRATION	
							(a)	(b)	(c)	(d)	(a) FIG NO.	(b) ITEM NO.
							1-5	6-20	21-50	51-100		
X2 0 00382		CLAMP, LOOP: control. valve to tilt cylinder line, type -"A" 1/2 in. 6H12 (12603)		EA		2						
X2 0 00383		CLAMP: tube pump to control valve line 16H16 (12603)		EA		1						
P 0 00384	4820-272-3346	COCK: oil tank drain, 3/8 in. IF 7n13 (12603)		EA		1	*	*	*	*		
P 0 00385	4730-010-0597	CONNECTOR, FITTING: w/packing control valve, top of port, 1/2 in. tube 3/4 in. 16 15K6 (12603)		EA		1	*	*	*	*		
P 0 00036	5330-714-5265	PACKING, PREFORMED: elbow, control valve 91.6 (12603)		EA		1	*	*	*	*	2	
X2 0 00387		ELBOW control valve loser port; tilt cylinder, w/packing 3/8 in. tube by 9/16 in. 18, 90 dg 17K5 (12603)		EA		5						
P 0 00388	2530-534-5568	PACKING, PREFORMED: elbow 154128 (62983)		EA		5	*	2	2	3		
P 0 00389	4730-674-6845	ELBOW, TUBE TO HOSE: control valve, 5/8 in. by 7/8 in. 14 9410282 (24617)		EA		1	*	*	*	*		
P 0 00390	4730-674-6844	ELBOW, TUBE TO HOSE: swivel, control valve, top port, 1/2 in. tube by 3/4 in. 16 11K6 (12603)		EA		1	*	*	*	*		
P 0 00391	4730-674-6832	ELBOW, TUBE TO HOSE w/packing, oil tank, 5/8 in. tube by 3/4 in. 16 17K7 (12603)		EA		1	*	*	*	*		
P 0 00392	5330-064-7777	PACKING, PREFORMED: elbow, oil tank 91F7 (12603)		EA		1	*	*	*	2		
X2 0 00393		ELBOW: w/packing, bulkhead, control valve to lift cylinder line 763818 (12603)		EA		1						
P 0 00394	5330-064-7777	PACKING, PREFORMED: elbow, control valve to lift cylinder 91F7 (12603)		EA		1	*	*	*	2		

(1) SMR CODE INDEX NO.	(2) FEDERAL STOCK NUMBER	(3) DESCRIPTION REFERENCE NO. & MFR CODE USABLE ON CODE		(4) UNIT OF ISSUE	(5) QTY INC IN UNIT PACK	(6) QTY INC IN UNIT	(7) 15 DAY ORGANIZATIONAL MAINTENANCE ALW				(8) ILLUS- TRATION		
							(a)	(b)	(c)	(d)	(a)	(b)	
							1-5	6-20	21-50	51-100	FIG NO.	ITEM NO.	
X2 0 00395	5330-064-7777	ELBOW: w/packing, hydraulic pump, 5/8 in. tube by 7/8 in. 14, 45 deg 18K7 (12603)		EA		1					13	1	
P 0 00396		PACKING, PREFORMED: pump elbow 9IF7 (12603)		EA		1	*	*	*	2			
X2 OR 00397	5306-833-9088	FILTER FLUID PRESSURE: hydraulic oil tank 733288 (12603)		EA		1							
0 00398		BOLT: filter mounting		EA		7	*	*	*	*	17	2	
X2 0 00399	4330-876-4572	CASE: filter oil tank 738549 (12603)		EA		1					17	11	
X2 0 00400		COVER: filter 733290 (12603)		EA		1						17	1
P 0 00401	4720-629-5186	FILTER ELEMENT, FLUID PRESSURE: filter 733289 (12603)		EA		1	2	2	4	8	17	5	
X2 0 00402		GASKET: filter 733295 (12603)		EA		2						17	4
X2 0 00403	3930-805-9972	GASKET: filter to tank 736525 (12603)		EA		2						17	3
P 0 00404		HOSE ASSEMBLY, RUBBER: control valve line to cylinder 5/8 in. id, by 1 in. od by 23 in. lg 660160 (12603)		EA		1	*	*	*	*			
P 0 00405	3930-733-9729	HOSE ASSEMBLY, RUBBER: pump elbow to control valve line, 5/8 in. id by 1 in. od by 27 in. lg 659891 (12603)		EA		1	*	*	*	*			
P 0 00406		HOSE ASSEMBLY, RUBBER: tilt cylinder front, 7/16 in. id by 11/16 in. od by 16 1/4 in. lg 672257 (12603)		EA		2	*	*	*	*			
P 0 00407	3930-733-9730	HOSE ASSEMBLY, RUBBER: tilt cylinder rear, 7/16 in. id by 11/16 in. od by 26 1/4 in. lg 672258 (12603)		EA		2	*	*	*	*			

(1) SMR CODE INDEX NO.	(2) FEDERAL STOCK NUMBER	(3) DESCRIPTION REFERENCE NO. & MFR CODE USABLE ON CODE		(4) UNIT OF ISSUE	(5) QTY INC IN UNIT PACK	(6) QTY INC IN UNIT	(7) 15 DAY ORGANIZATIONAL MAINTENANCE ALW				(8) ILLUS- TRATION	
							(a)	(b)	(c)	(d)	(a)	(b)
							1-5	6-20	21-50	51-100	FIG NO.	ITEM NO.
X2 0 00408	3930-612-0767	HOSE, RUBBER: carbon pile to tank, 1 in. id by 1 1/2 in. od by 33 1/2 in. lg 799136 (12603)		EA		1						
X2 0 00409		HOSE, RUBBER: control valve line to tank, 1 in. id by 1 3/8 in. od by 8 in. lg 664832 (24617)		EA		1						
M 0 00410		HOSE, RUBBER: control valve line to tube, 5/8 in. id by 7/8 in. od 660408 (12603) MANUFACTURE FROM		EA		1						
P 0 00411	4720-204-1784	HOSE, RUBBER (5 in. required)		FT			SEE	GRP	9501			
X2 0 00412	4730-908-3193	CLAMP: hose 74R662 (12603)		EA		2						
X2 0 00413		HOSE, RUBBER: tank to pump 797646 (12603)		EA		1						
P 0 00414		CLAMP: hose HS35842-12 (96906)		EA		2	*	*	*	"		
X2 0 00415		LINE ASSEMBLY: control valve to hose 1610551 (12603)		EA		1						
X2 0 00416		LINE ASSEMBLY- control valve to lift cylinder hose 1610553 (12603)		EA		1						
X2 0 00417		LINE ASSEMBLY: control valve to lift cylinder hose, front 1610555 (12603)		EA		1						
X2 0 00418		LINE ASSEMBLY: control valve to tilt cylinder hose 1610556 (12603)		EA		1						
X2 0 00419		LINE ASSEMBLY: pump hose to control valve, front outlet 1610554 (12603)		EA		1						
X2 0 00420		LINE: control valve hose to oil tank hose 1610552 (12603)		EA		1						

(1) SMR CODE INDEX NO.	(2) FEDERAL STOCK NUMBER	(3) DESCRIPTION  REFERENCE NO. & MFR CODE  USABLE ON CODE		(4) UNIT OF ISSUE	(5) QTY INC IN UNIT PACK	(6) QTY INC IN UNIT	(7) 15 DAY ORGANIZATIONAL MAINTENANCE ALW				(8) ILLUS- TRATION	
							(a)	(b)	(c)	(d)	(a) FIG NO.	(b) ITEM NO.
							1-5	6-20	21-50	51-100		
0 00421 P 0	4730-018-9566 3930-789-4897	PLUG, PIPE: oil sump level, malleable iron, black, sq-hd, 1/8 in. NPT		EA EA		1 1	* *	* *	* *			
00422 X2 0 00423 X2 0 200424 0		VALVE ASSEMBLY: check, filter 733291 (12603) BALL: check valve, filter, 7/8 in. 10J28 (12603) PLATE: filter check valve 733292 (12603)		EA EA EA		1 1				17 17	7 8	
00425 X2 0 00426 X2 0 00427 00428 00429 P 0 00430	5310-045-1001	NUT, SELF-LOCKING, HEXAGON: steel, 1/4 in. 20 NC 2B		EA		2	* *	* *	* *	17	10	
00425 X2 0 00426 X2 0 00427 00428 00429 P 0 00430		WASHER: stat-o-seal, filter 791837 (12603) SPRING: . check valve, filter 733293 (12603)		EA EA		4 1				17 17	9 6	
00428 00429 P 0 00430		GROUP 40 - ELECTRIC MOTORS 4010 - MASTER CONTROL PANEL ASSEMBLY										
00430 X2 0 00431 P 0 00432 P 0 00433 X2 0 00434	4730-754-0152 5920-72-6679 5920-548-3125	BOLT, FLUID PASSAGE: hex-hd, control cylinder, carbon pile, 1/2 in. 20 by 1/36 in. FC673 (63477) COVER: contractor box 765838 (12603) FUSE, CARTRIDGE: diode, 2 ap 8MS14 (12603) FUSE, CARTRIDGE horn, light, 10 amp OT10 (71424) HOSE, RUBBER: outlet to line, 1 in. id by 1 1/2 in. da by 331/2 in, ig 799136 (12603)		EA EA EA EA EA		1 1 1 2 1	*  SEE SEE	*  GRP GRP	*  4011 4011	20	5	

(1) SMR CODE INDEX NO.	(2) FEDERAL STOCK NUMBER	(3) DESCRIPTION  REFERENCE NO. & MFR CODE  USABLE ON CODE		(4) UNIT OF ISSUE	(5) QTY INC IN UNIT PACK	(6) QTY INC IN UNIT	(7) 15 DAY ORGANIZATIONAL MAINTENANCE ALW				(8) ILLUS- TRATION	
							(a)	(b)	(c)	(d)	(a)	(b)
							1-5	6-20	21-50	51-100	FIG NO.	ITEM NO.
0 00435 X2 0 00436 X2 0 00437	4730-467-3514	CLAMP: hose, 1 in. to 3 in. adjustable		EA		2	*	*	*	*		
		HOSE, RUBBER: solenoid valve to control cylinder, 26 in. lg 765830 (12603)		EA		1						
		SCREW, CAP, HEXAGON SOCKET: button hd, steel, cadmium or zinc coated, 1/2 in. 20 NF 3A by 1 in. 26G816 (12603)		EA		4						
00438 P 0	5920-072-6679	4011 - FUSE AND FUSEHOLDER FUSE, CARTRIDGE: diode, 2 amp 888814 (12603)		EA		1	*	*	2	2	18	3
00439 P 0	5920-548-3125	FUSE, CARTRIDGE: horn, lights; 10 amp OT10 (71424)		EA		2	*	*	*	*	18	2
00440 P 0	5920-671-4569	FUSE: main, 400 amp 625383 (12603)		EA		1	*	*	2	2	18	1
00441 00442 X2 0		4012 - SWITCHES BRACKET: directional switch 337442 (12603)		EA		1						
00443 X2 0		COVER: wire, directional switch 1G11578 (12603)		EA		1						
00444 X2 0		GROMMET: directional switch 304914 (12603)		EA		1						
00445 X2 0		INSULATION: brake switch 1611071 (12603)		EA		1						
00446 P 0	5355-765-5688	KNOB: handle, directional switch 653785 (12603)		EA		1	*	*	*	*	21	1
00447 0	5310-013-4530	NUT, PLAIN, HEXAGON: steel, cadmium or zinc coated, No. 6-32 NC 2B		EA		2	*	*	*	*	19	13
00448 P 0	5930-072-6668	REPAIR KIT: directional switch 889312 (12603)		EA		1	*	*	2	2		

(1) SMR CODE INDEX NO.	(2) FEDERAL STOCK NUMBER	(3) DESCRIPTION  REFERENCE NO. & MFR CODE  USABLE ON CODE		(4) UNIT OF ISSUE	(5) QTY INC IN UNIT PACK	(6) QTY INC IN UNIT	(7) 15 DAY ORGANIZATIONAL MAINTENANCE ALW				(8) ILLUS- TRATION	
							(a)	(b)	(c)	(d)	(a)	(b)
							1-5	6-20	21-50	51-100	FIG NO.	ITEM NO.
X1 00450		BALL BEARING: 3/16 IN. 889312 (12603)		EA		1					21	11
X1 00451		GASKET 889312 (12603)		EA		1					21	8
X1 00452		PIN: operating 889312 (12603)		EA		2					21	3
X1 00453		PIN, ROLL 889312 (12603)		EA		1					21	2
X1 00454		SPACER 889312 (12603)		EA		2					21	7
X1 00455		SPRING 889312 (12603)		EA		1					21	10
X1 00456		SPRING: pin 889312 (12603)		EA		2					21	4
C O 00457		SCREW, CAP, SOCKET HEAD: cap to bracket, steel, cadmium or zinc coated, 1/4 in. 20 NC 2A by 5/8 in. 11G410J (12603)		EA		4	*	*	*	*		
O 00458	5305-012-1832	SCREW, MACHINE: rd-hd, slotted, steel, cadmium or zinc coated, No. 8-32 NC 2A by 3/8 in.		EA		6	*	*	*	*		
O 00459	5305-282-3886	SCREW, MACHINE: rd-hd, slotted, steel, cadmium or zinc coated, No. 6-32 NC 2A by 1 1/4 in.		EA		2	*	*	*	*	19	9
O 00460	5305-013-2719	SCREW, MACHINE: rd-hd, slotted, steel, cadmium or zinc coated, No. 6-32 by 1 in.		EA		2	*	*	*	*	21	6
X2 O 00461		SHIELD: directional switch 390512 (12603)		EA		1						
P O 00462	5930-887-0000	SWITCH: brake BA3ST (91929)		EA		1	*	*	*	*		
P O 00463	5930-789-4892	SWITCH: deadman accelerator pedal GZ2RDT (91929)		EA		1	*	*	*	*	19	8

(1) SMR CODE INDEX NO.	(2) FEDERAL STOCK NUMBER	(3) DESCRIPTION  REFERENCE NO. & MFR CODE  USABLE ON CODE		(4) UNIT OF ISSUE	(5) QTY INC IN UNIT PACK	(6) QTY INC IN UNIT	(7) 15 DAY ORGANIZATIONAL MAINTENANCE ALW				(8) ILLUS- TRATION	
							(a)	(b)	(c)	(d)	(a) FIG NO.	(b) ITEM NO.
							1-5	6-20	21-50	51-100		
X2 O 00464		SWITCH: directional, forward and reverse CLASS 8963EQ2119 (81481)		EA		1						
X2 O 00465		CONTACT UNIT: directional switch 2357C3G6 (81487)		EA		1					21	5
X2 O 00466		GASKET: shield, directional switch 390574 (12603)		EA		1						
X2 O 00467		HANDLE ASSEMBLY: directional switch A31009-036-51 (81487)		EA		1					21	12
X2 O 00468		NUT: ring, directional switch 4487C6X (81487)		EA		1					21	9
P O 00469	5930-886-9998	SWITCH: power cutoff, parking brake 4803 (91929)		EA		1	*	*	*	*	6	12
P O 00470	5310-194-0607	WASHER: brake switch 616775 (12603)		EA		2	*	*	*	*		
X2 O 00471		WASHER, FLAT 712093 (12603)		EA		2					19	12
O 00472	5310-012-1752	WASHER, LOCK: ext-tooth, steel, No. 8		EA		6	*	*	*	*		
O 00473	5310-013-8473	WASHER, LOCK: ext-tooth, steel, cadmium or zinc coated, No. 6		EA		2	*	*	*	*	19	11
O 00474	5310-033-1044	WASHER, LOCK: med, steel, cadmium or zinc coated, No. 6		EA		2	*	*	*	*		
00475		4014 - RESISTORS										
O 00476	5310-012-0622	NUT, PLAIN, HEXAGON: steel, cadmium or zinc coated, No. 8-32 NC 2B		EA		2	*	*	*	*		
O 00477	5310-012-0622	NUT, PLAIN, HEXAGON: steel, cadmium or zinc coated, No. 8-32 NC 2B		EA		2	*	*	*	*		
P O 00478	5905-978-4711	RESISTOR: headlight 655504 (12603)		EA		1	*	*	*		2	
P O 00479	5905-978-4720	RESISTOR: stop light 798853 (12603)		EA		1	*	*	*	*		



(1) SMR CODE INDEX NO.	(2) FEDERAL STOCK NUMBER	(3) DESCRIPTION  REFERENCE NO. & MFR CODE  USABLE ON CODE		(4) UNIT OF ISSUE	(5) QTY INC IN UNIT PACK	(6) QTY INC IN UNIT	(7) 15 DAY ORGANIZATIONAL MAINTENANCE ALW				(8) ILLUS- TRATION	
							(a)	(b)	(c)	(d)	(a)	(b)
							1-5	6-20	21-50	51-100	FIG NO.	ITEM NO.
P O 00480	5905-789-7645	RESISTOR: taillight 1613417 (12603)		EA		1	*	*	*	*	18	4
O 00481	5305-954-2728	SCREW, MACHINE: fl-hd, slotted, steel, cadmium or zinc coated, No. 8-32 NC 2A by 3/4 in.		EA		2	*	*	*	*		
O 00482	5305-954-2728	SCREW, MACHINE: fl-hd, slotted, steel, cadmium or zinc coated, No. 8-32 NC 2A by 3/4 in.		EA		2	*	*	*	*		
X2 O 00483		SCREW, TAPPING, THREAD CUTTING: rd-hd, slotted, steel, cadmium or zinc coated, No. 10-12 by 3/8 in. 18G1006 (12603)		EA		2						
O 00484	5310-012-1841	WASHER, LOCK: med, steel, cadmium or zinc coated, No. 8		EA		2	*	*	*	*		
O 00485	5310-012-1841	WASHER, LOCK: med, steel, cadmium or zinc coated, No. 8		EA		2	*	*	*	*		
00486		GROUP 95 - GENERAL USE STANDARDIZED PARTS										
00487		9501 - BULK MATERIAL										
P O 00488	4720-204-1784	HOSE, RUBBER: cotton rubber lined, 5/8 in. id by 7/8 in. od 1525-10 (00624)		FT		AR	*	*	*	*		

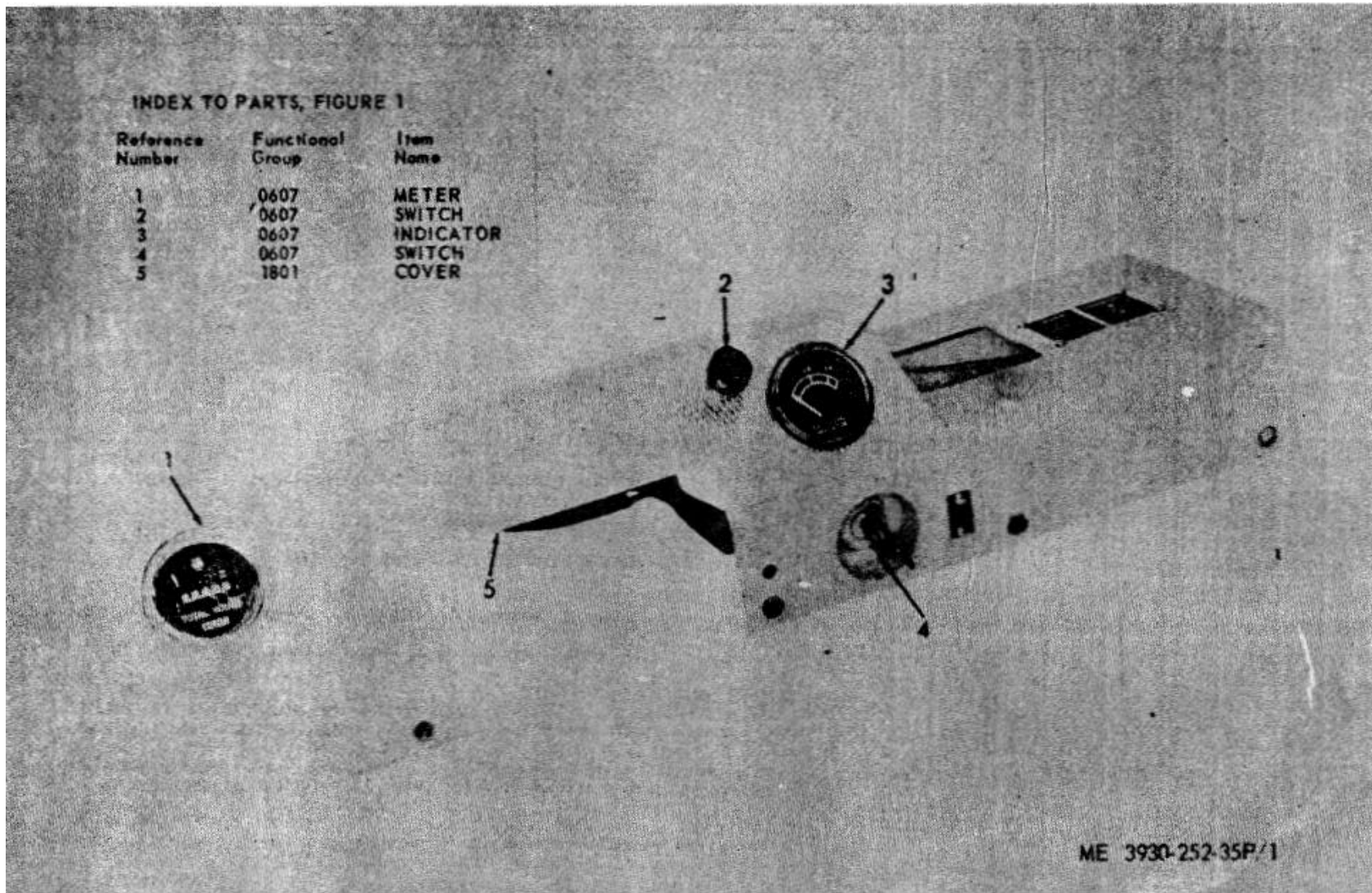


Figure 1. Instruments.

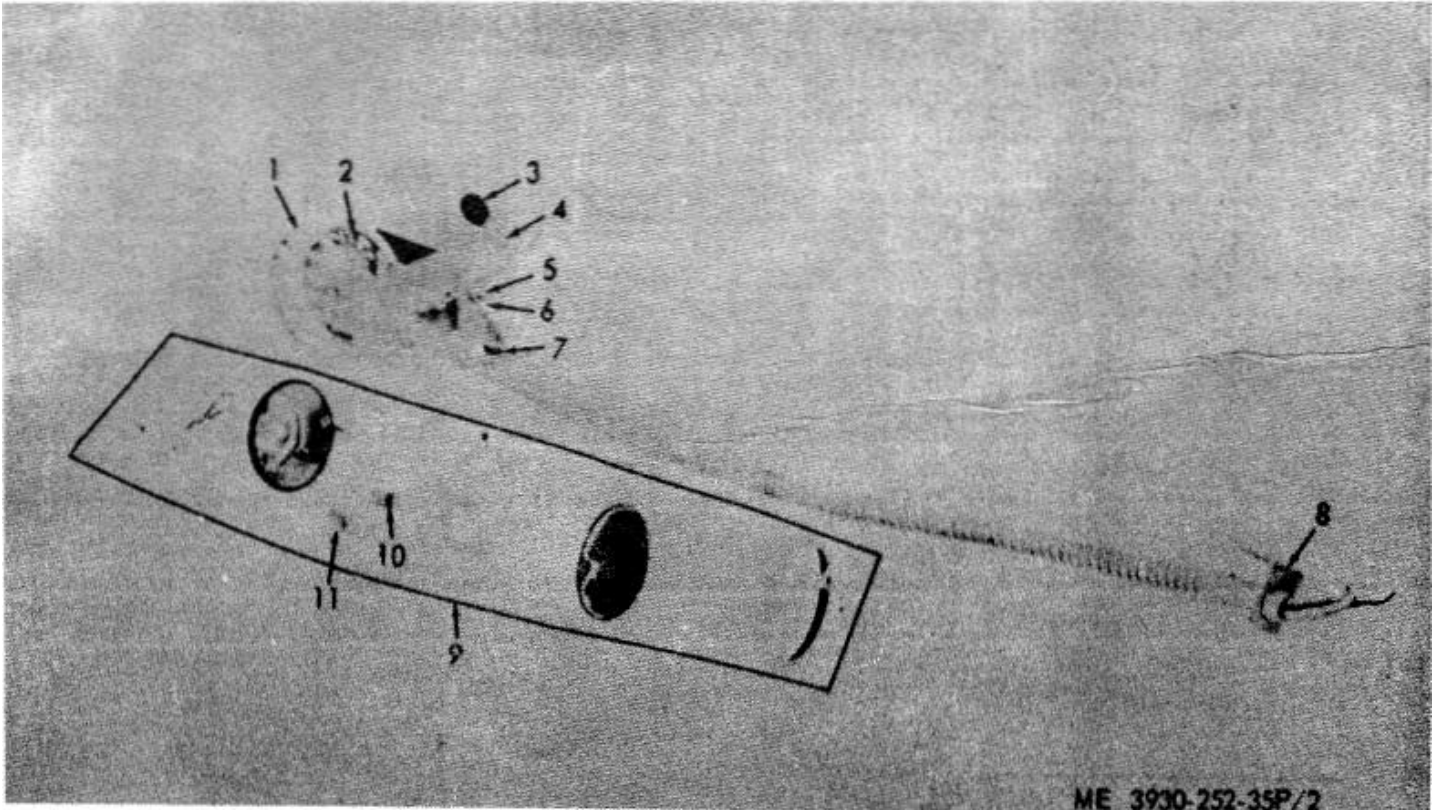


Figure 2. Headlight, Taillight, Stoplight.

INDEX TO PARTS, FIGURE 2

Reference Number	Functional Group	Item Name
1	0609	GUARD
2	0609	HEADLIGHT
3	0609	KNOB
4	0609	HANDLE
5	0609	NUT
6	0609	BOLT
7	0609	BRACKET
8	0609	STRAP
9	0609	STOPLIGHT
10	0609	LAMP
11	0609	LAMP

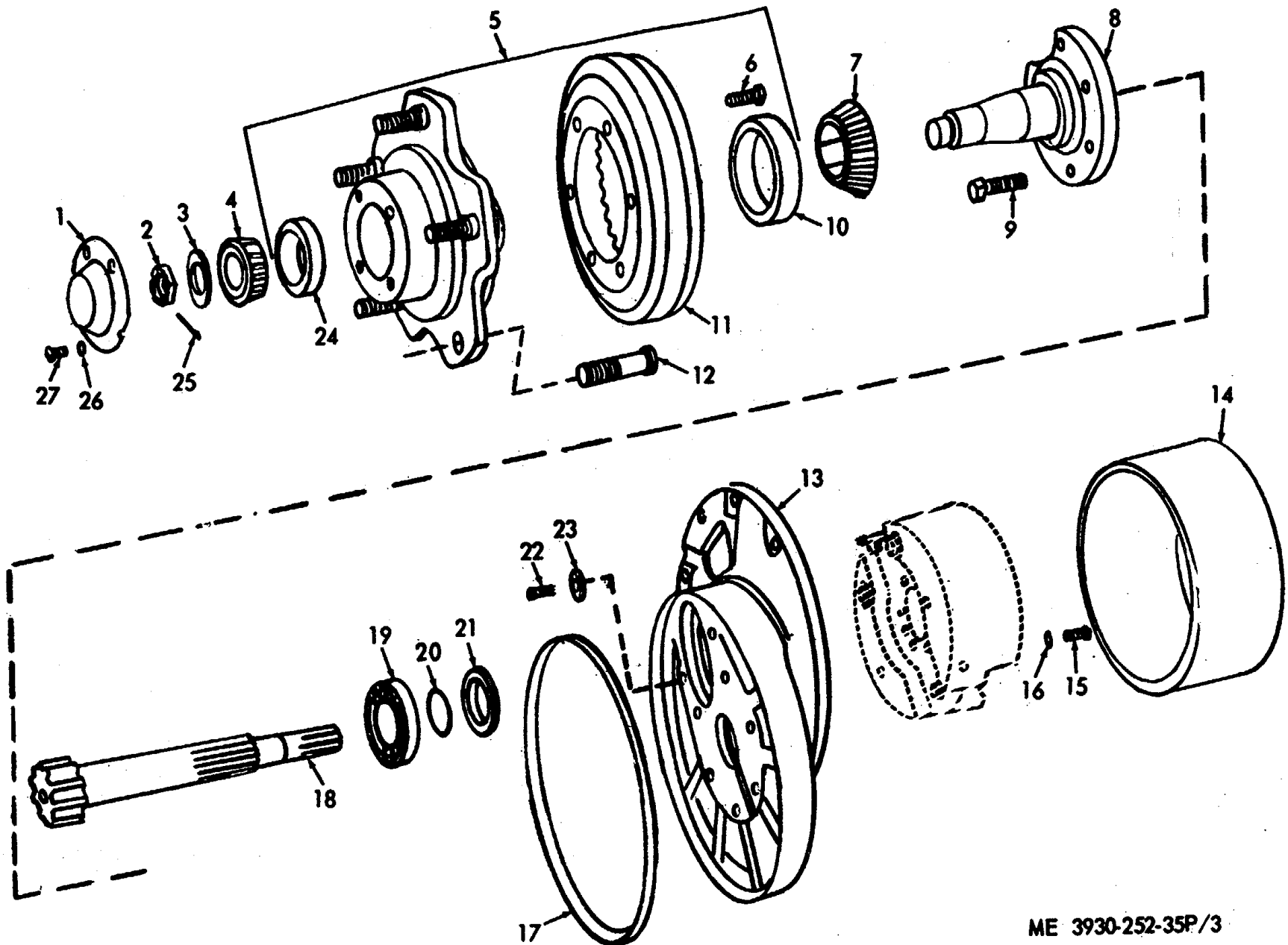
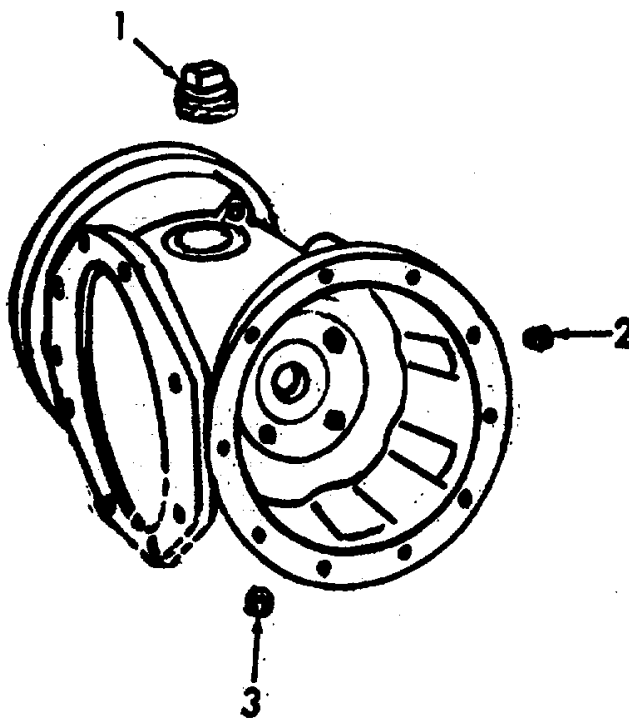


Figure 3. Front Axle End Assembly.

ME 3930-252-35P/3

**INDEX TO PARTS, FIGURE 3**

<b>Reference Number</b>	<b>Functional Group</b>	<b>Item Name</b>	<b>Reference Number</b>	<b>Functional Group</b>	<b>Item Name</b>
1	1000	CAP	15	1202	SCREW
2	1000	NUT	16	1202	WASHER
3	1000	WASHER	17	1000	SEAL
4	1000	CONE-ROLLERS	18	1000	SHAFT
S	1000	HUB AY	19	1000	BEARING, BALL
6	1000	BOLT	20	1000	RING
7	1000	CONE-ROLLERS	21	1000	SEAL
8	1000	SPINDLE	22	1000	SCREW
9	1000	BOLT	23	1000	WASHER
10	1000	CUP	24	1000	CUP
11	1000	GEAR	25	1000	PIN COTTER
12	1000	BOLT	26	1000	WASHER
13	1000	SUPPORT	27	1000	SCREW
14	1000	DRUM			

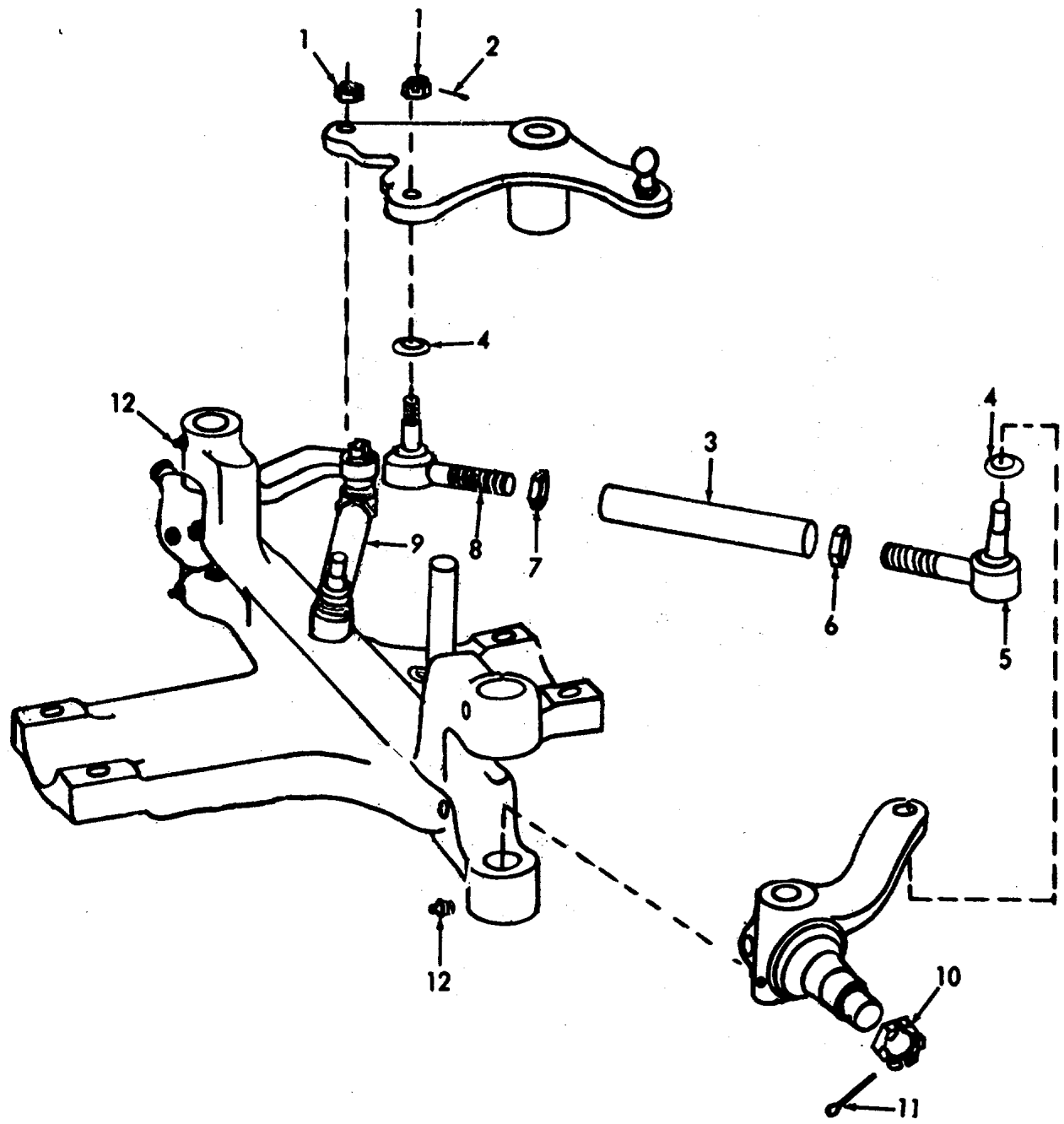


**ME 3930-252-20P/4**

Figure 4. Axle Adapter and Related Parts.

INDEX TO PARTS, FIGURE 4

Reference Number	Functional Group	Item Name
1	1002	PLUG
2	1002	PLUG
3	1002	PLUG



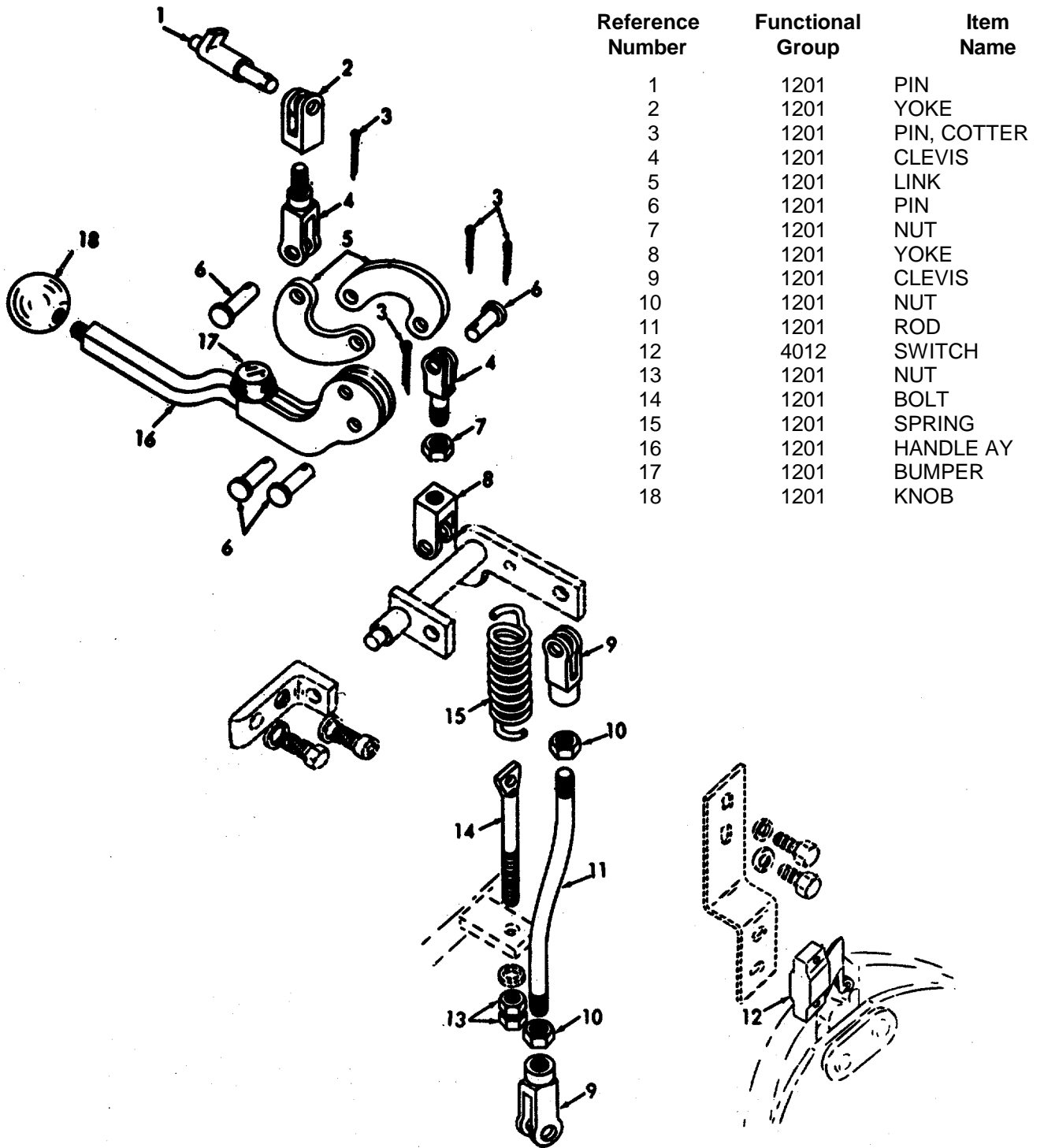
ME 3930-252-20P/5

Figure 5. Rear Axle, Steering.

INDEX TO PARTS, FIGURE 5

Reference Number	Functional Group	Item Name	Reference Number	Functional Group	Item Name
1	1401	NUT	7	1401	NUT
2	1401	PIN	8	1401	TIE ROD END
3	1401	TIE ROD	9	1401	TIE ROD AY
4	1401	COVER	10	1311	NUT
5	1401	TIE ROD END	11	1311	PIN
6	1401	NUT	12	1104	FITTING

INDEX TO PARTS, FIGURE 6



Reference Number	Functional Group	Item Name
1	1201	PIN
2	1201	YOKE
3	1201	PIN, COTTER
4	1201	CLEVIS
5	1201	LINK
6	1201	PIN
7	1201	NUT
8	1201	YOKE
9	1201	CLEVIS
10	1201	NUT
11	1201	ROD
12	4012	SWITCH
13	1201	NUT
14	1201	BOLT
15	1201	SPRING
16	1201	HANDLE AY
17	1201	BUMPER
18	1201	KNOB

ME 3930-252-35P/7.

Figure 6. Hand Brake Linkage.



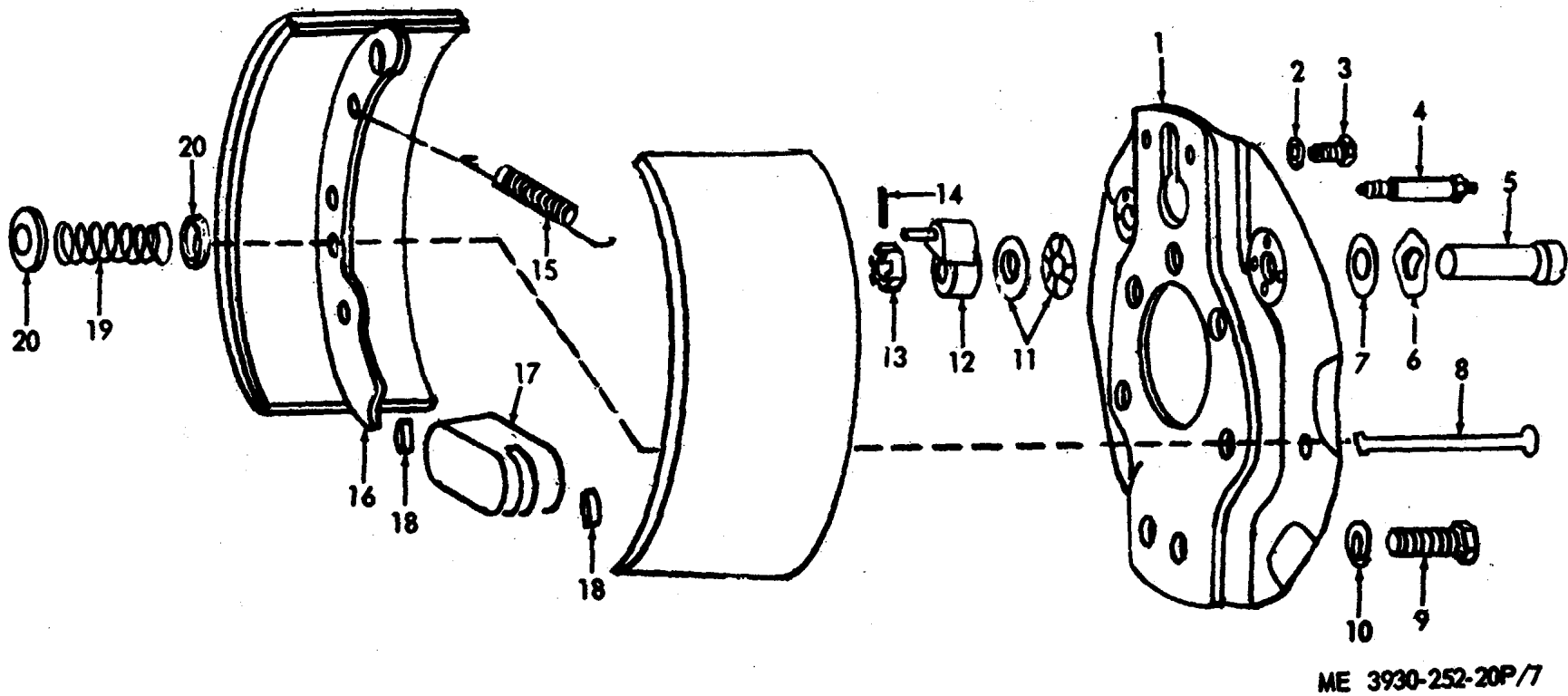


Figure 7. Service Brake.

INDEX TO PARTS, FIGURE 7

Reference Number	Functional Group	Item Name	Reference Number	Functional Group	Item Name
1	1202	PLATE	11	1202	WASHER
2	1204	WASHER	12	1202	ARM
3	1204	SCREW	13	1202	NUT
4	1204	VALVE	14	1202	PIN
5	1202	BOLT	15	1202	SPRING
6	1202	WASHER	16	1202	BRAKE SHOE
7	1202	WASHER	17	1202	BLOCK
8	1202	PIN	18	1202	KEY
9	1202	BOLT	19	1202	SPRING
10	1202	WASHER	20	1202	CUP

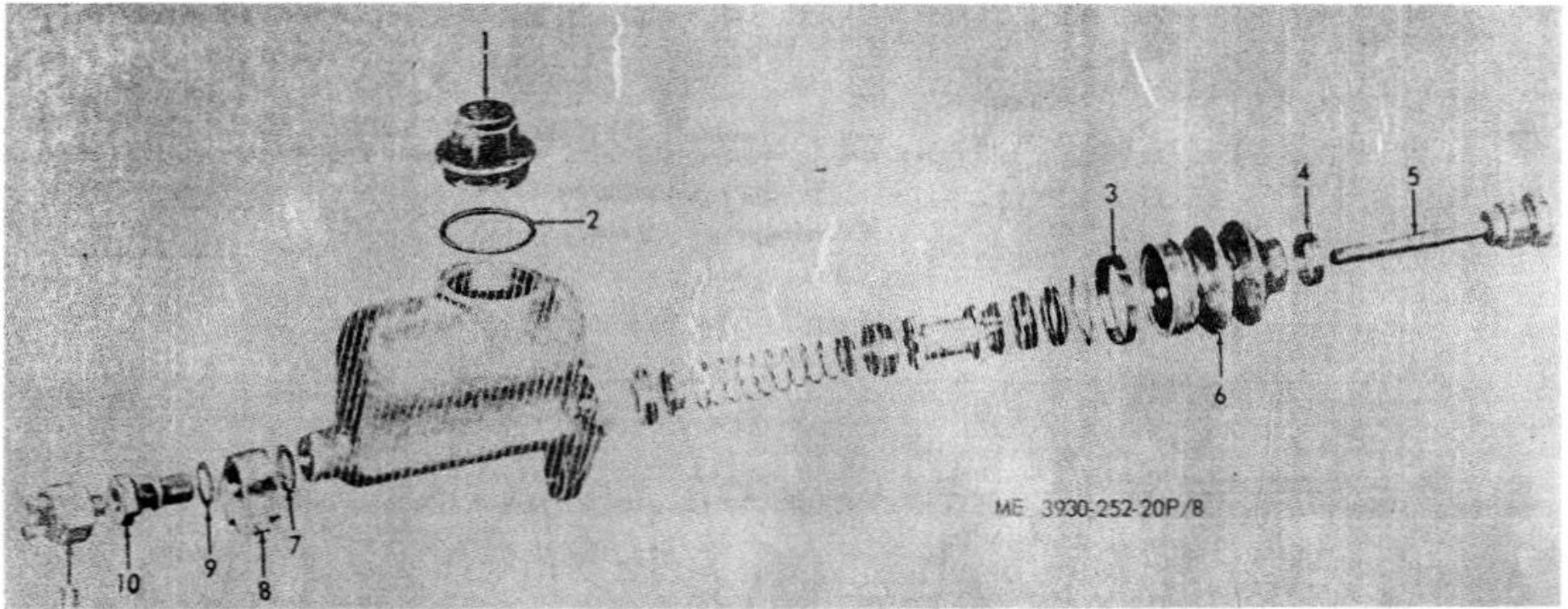


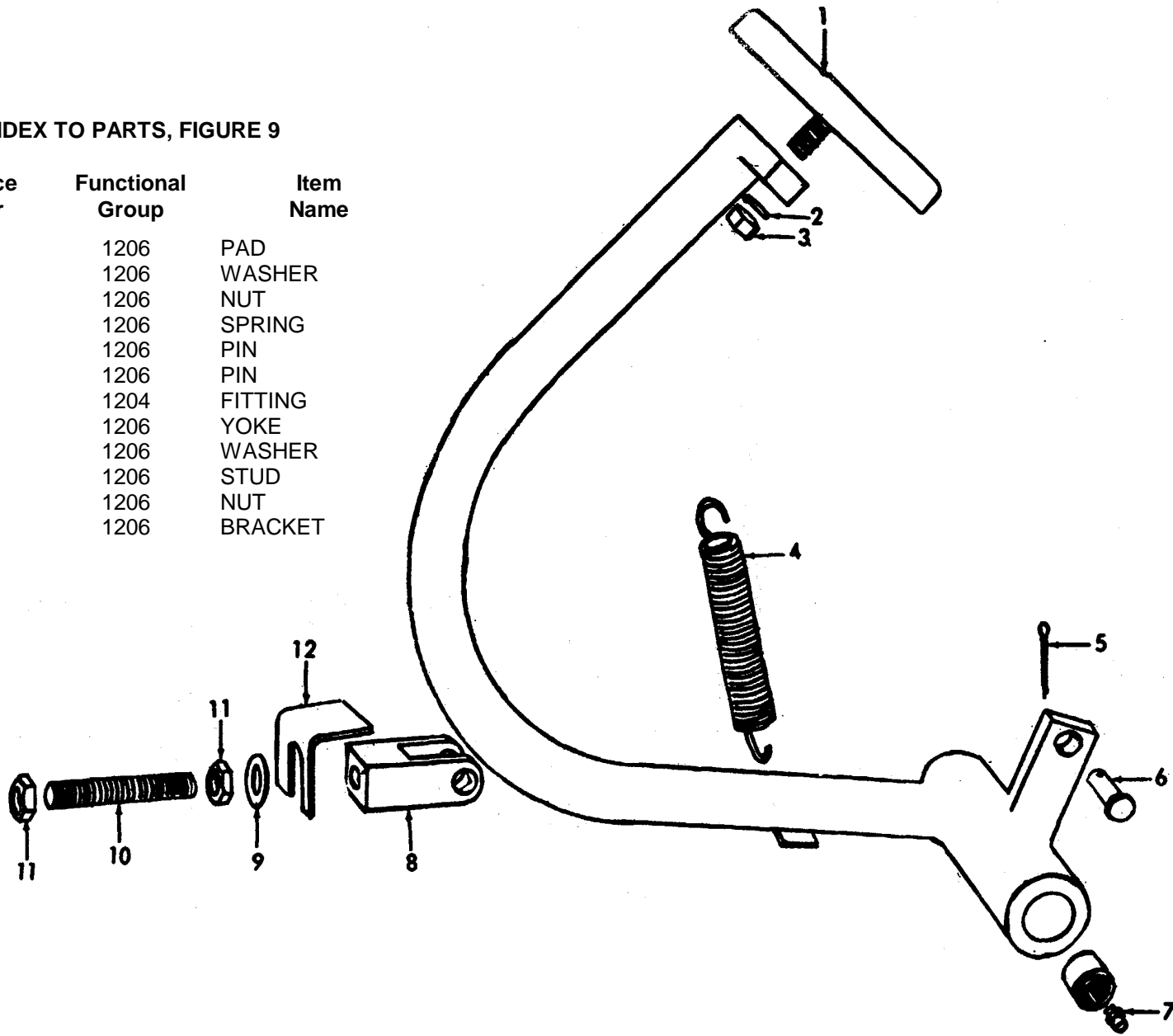
Figure 8. Hydraulic Brake Master Cylinder.

INDEX TO PARTS, FIGURE 8

Reference Number	Functional Group	Item Name
1	1204	CAP
2	1204	WASHER
3	1204	RING
4	1204	RING
5	1204	PUSHROD
6	1204	BELLOWS
7	1204	GASKET
8	1204	CONNECTOR
9	1204	WASHER
10	1204	BOLT
11	0610	SWITCH

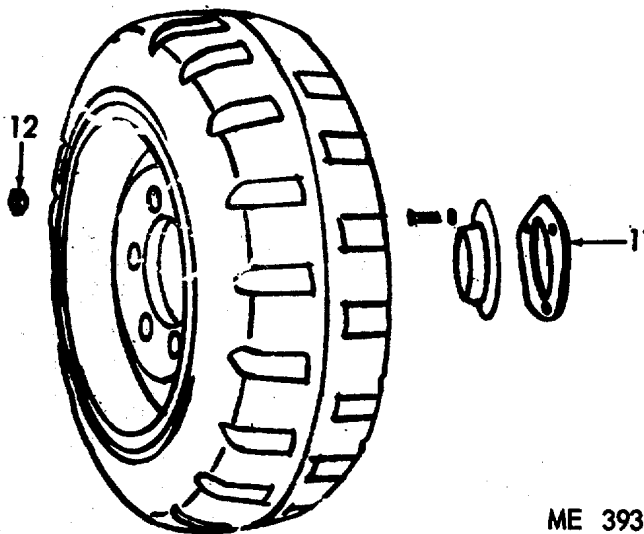
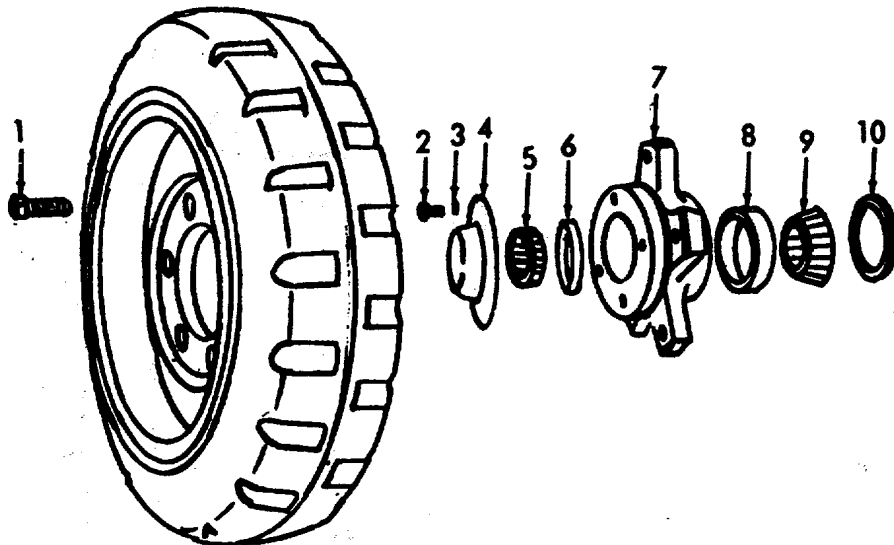
INDEX TO PARTS, FIGURE 9

Reference Number	Functional Group	Item Name
1	1206	PAD
2	1206	WASHER
3	1206	NUT
4	1206	SPRING
5	1206	PIN
6	1206	PIN
7	1204	FITTING
8	1206	YOKE
9	1206	WASHER
10	1206	STUD
11	1206	NUT
12	1206	BRACKET



ME 3930-252-20P/9

Figure 9. Brake Pedal, Linkage.

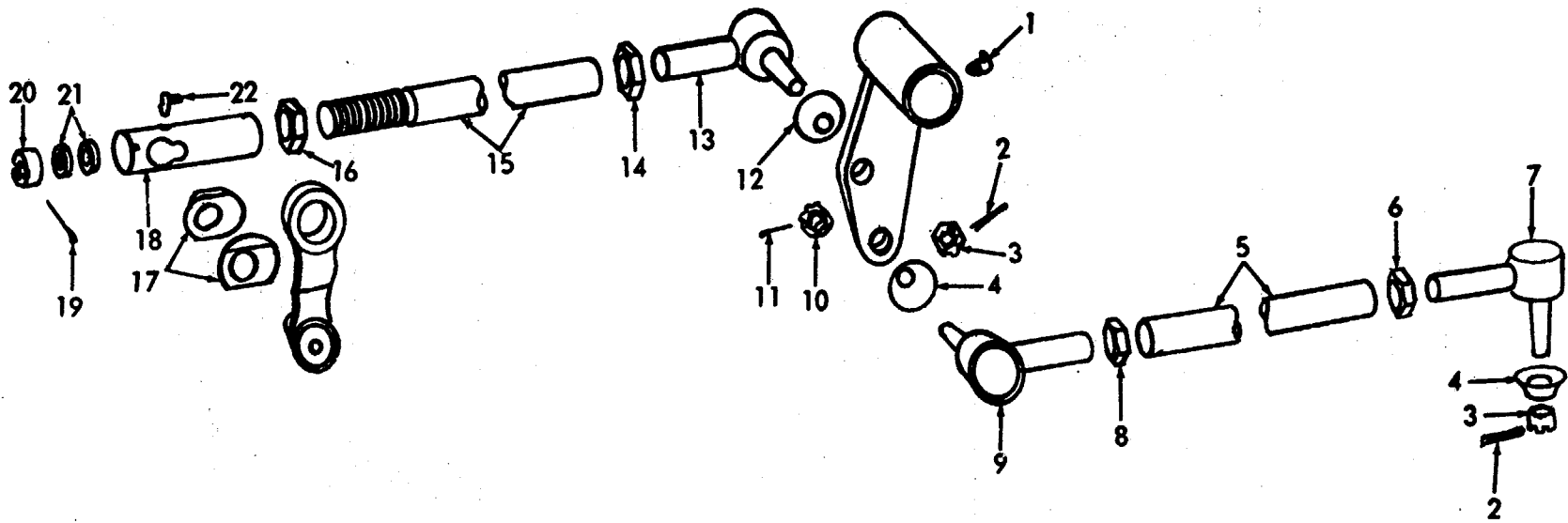


ME 3930-252-29P/10

Figure 10. Wheels, Drive and Steering.

INDEX TO PARTS, FIGURE 10

Reference Number	Functional Group	Item Name
1	1311	BOLT
2	1311	SCREW
3	1311	WASHER
4	1311	CAP
5	1311	CONE and ROLLERS
6	1311	CUP
7	1311	HUB and CUP AY'
8	1311	CUP
9	1311	CONE and ROLLERS
10	1311	SEAL
11	1000	GASKET
12	1311	NUT



ME 3930-252-20P/11

Figure 11. Tie Rods.

INDEX TO PARTS, FIGURE 11

Reference Number	Functional Group	Item Name	Reference Number	Functional Group	Item Name
1	1401	FITTING	12	1401	COVER
2	1401	PIN	13	1401	TIE ROD END
3	1401	NUT	14	1401	NUT
4	1401	COVER	15	1401	TIE ROD
5	1401	TIE ROD	16	1401	NUT
6	1401	NUT	17	1401	SHIELD
7	1401	TIE ROD END	18	1401	SOCKET
8	1401	NUT	19	1401	PIN
9	1401	TIE ROD END	20	1401	PLUG
10	1401	NUT	21	1401	SEAT
11	1401	PIN	22	1401	FITTING

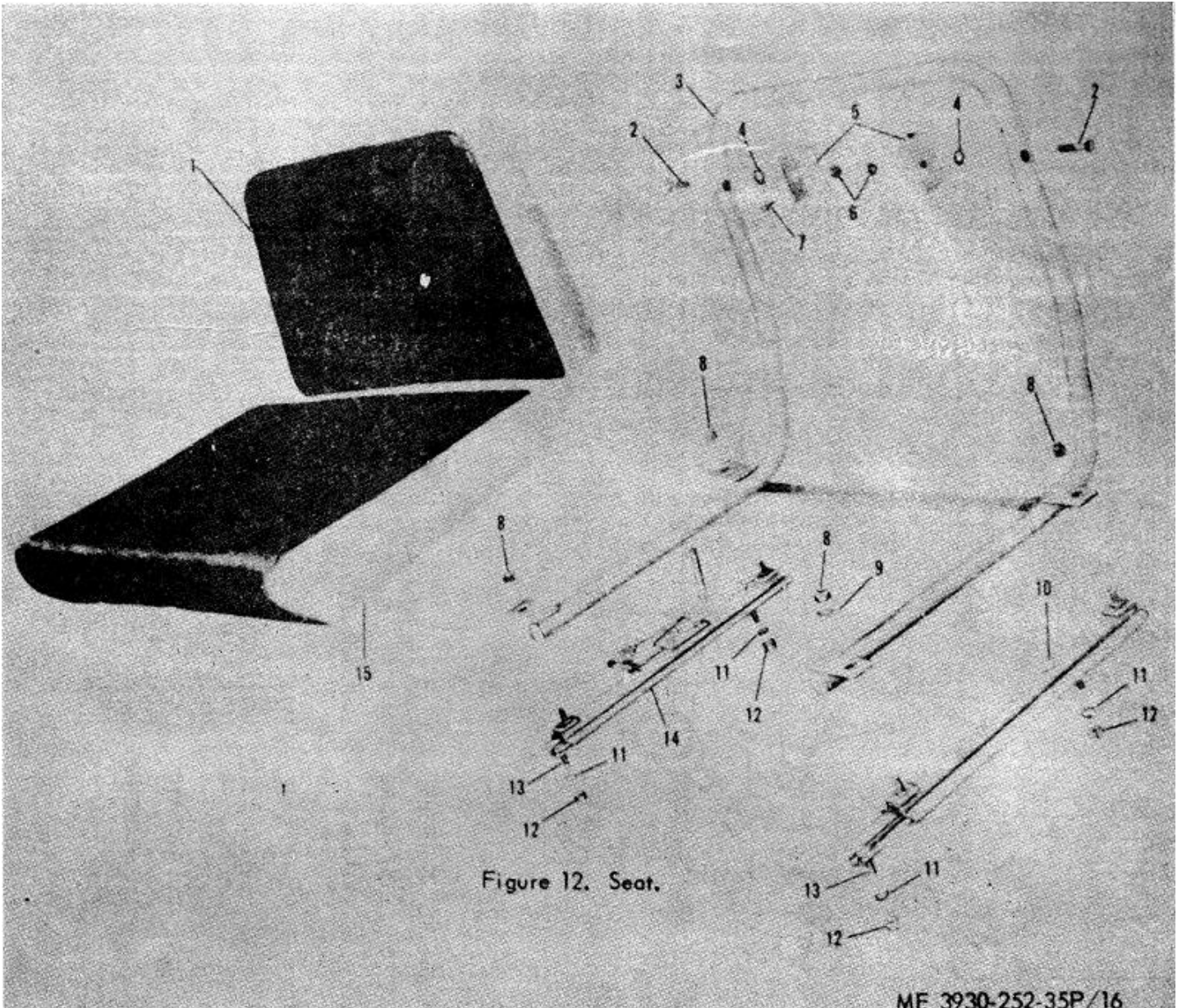


Figure 12. Seat.

MF 3930-252-35P/16

INDEX TO PARTS, FIGURE 12

Reference Number	Functional Group	Item Name
1	1806	CUSHION
2	1806	SCREW
3	1806	FRAME
4	1806	SPACER
5	1806	CLIP
6	1806	NUT
7	1806	SCREW
8	1806	NUT
9	1806	WASHER
10	1806	ADJUSTOR
11	1806	WASHER
12	1806	NUT
13	1806	SCREW
14	1806	ADJUSTOR
15	1806	CUSHION

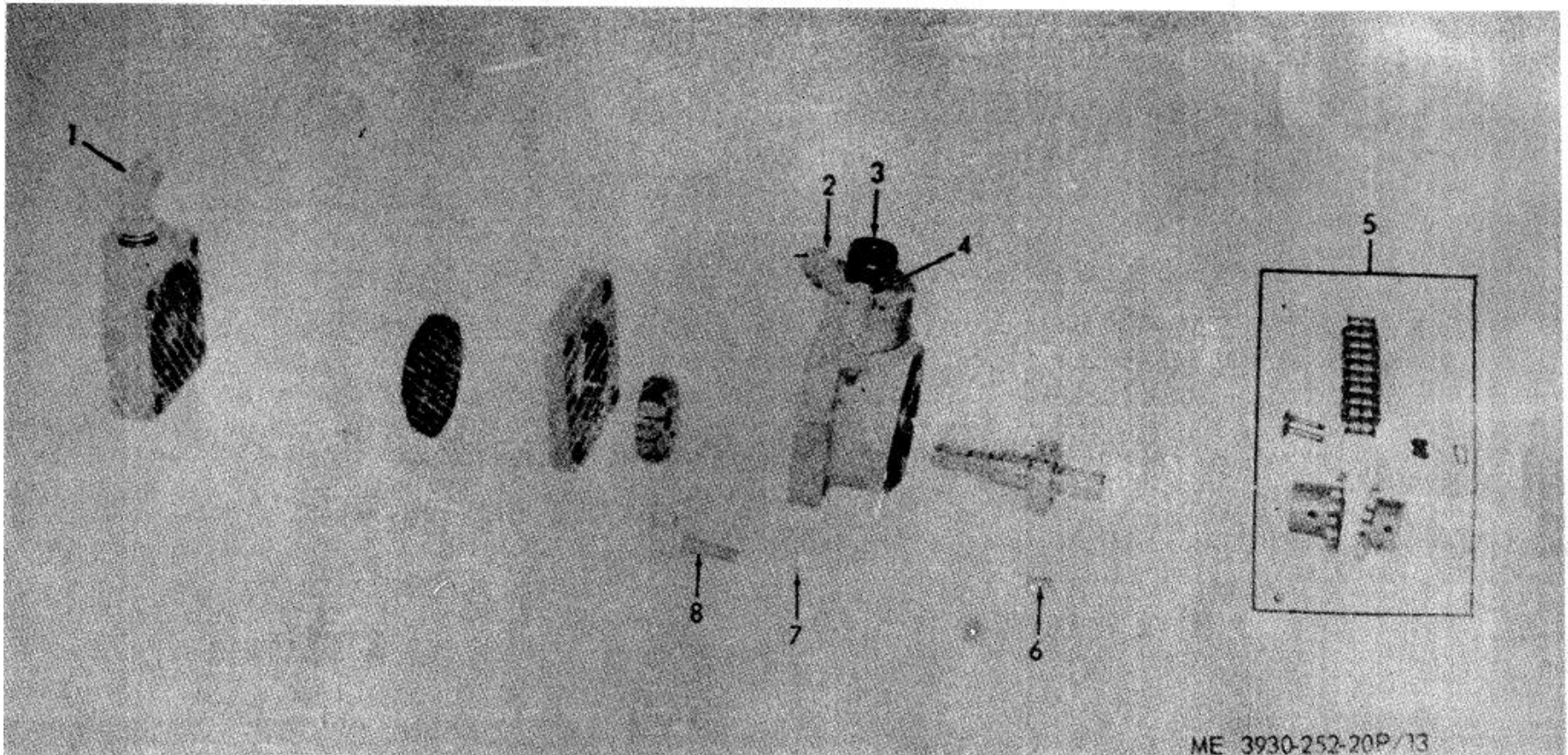
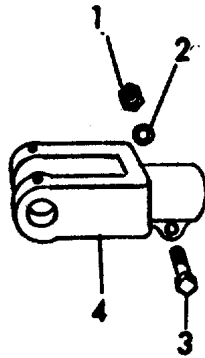


Figure 13. Hydraulic Pump.

INDEX TO PARTS, FIGURE 13

Reference Number	Functional Group	Item Name
1	2406	ELBOW
2	1411	ADAPTER
3	2401	FLANGE
4	2401	SCREW
5	2401	COUPLING
6	2401	KEY
7	2401	WASHER
8	2401	SCREW



ME 3930-252-20P/14

Figure 14. Hydraulic Tilt Cylinder.

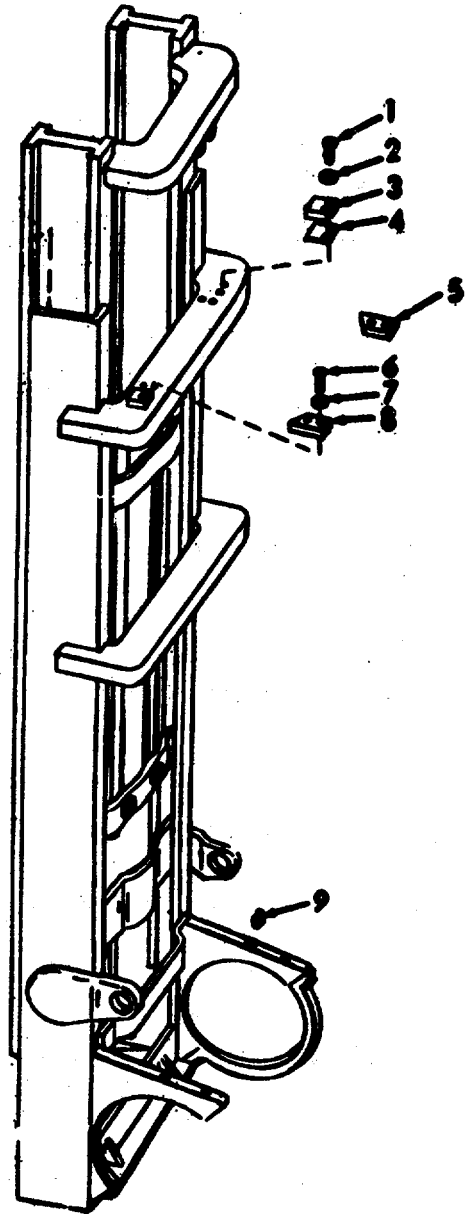
INDEX TO PARTS, FIGURE 14

Reference Number	Functional Group	Item Name
1	2404	NUT
2	2404	WASHER
3	2404	SCREW
4	2404	ROD END



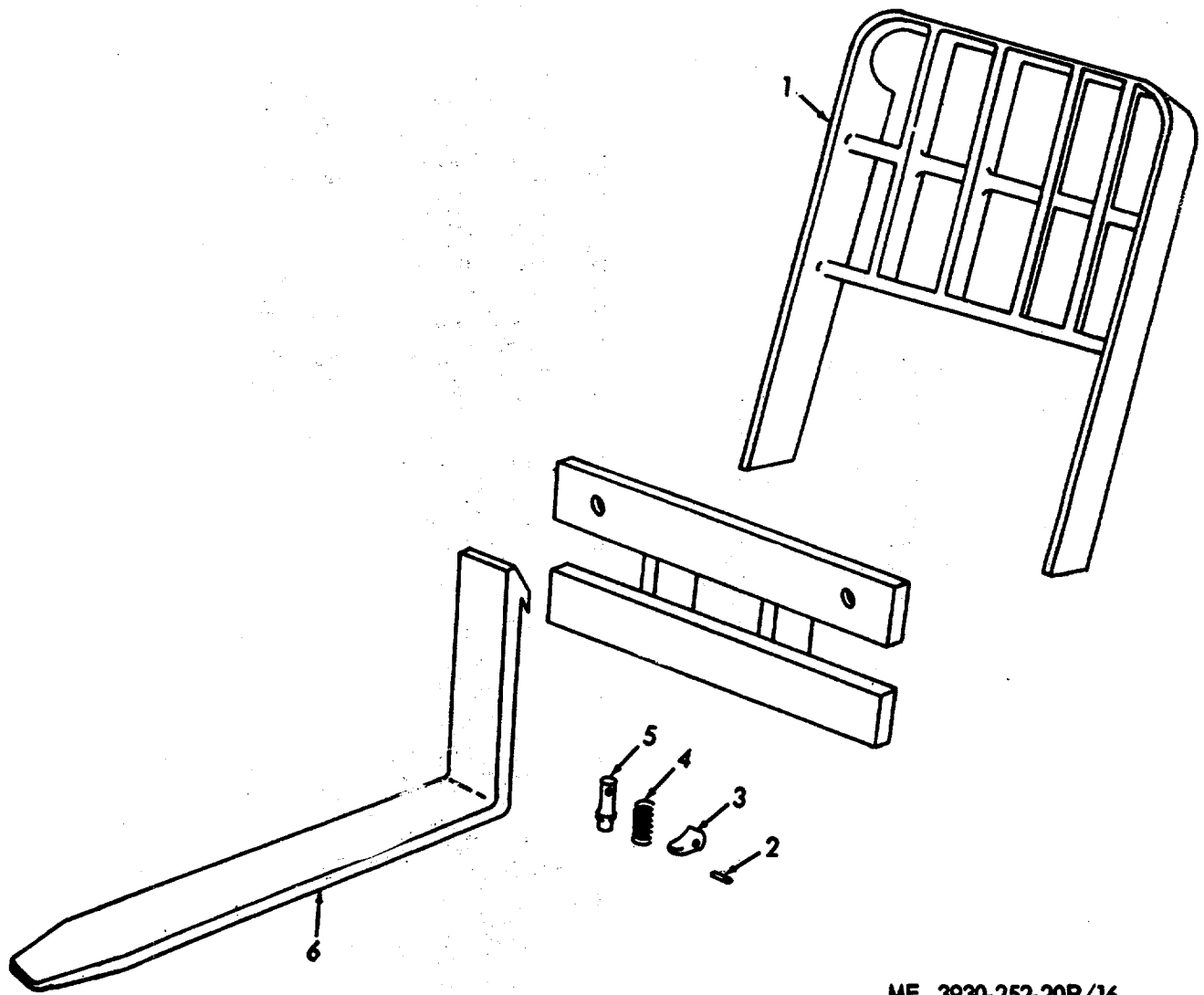
INDEX TO PARTS, FIGURE 15

Reference Number	Functional Group	Item Name
1	2405	SCREW
2	2405	WASHER
3	2405	PAD
4	2405	SHIM
5	2405	STOP
6	2405	SCREW
7	2405	WASHER
8	2405	STOP
9	2405	FITTING



ME 3930-252-20P/15

Figure 15. Hydraulic Mast Column and Related Parts.

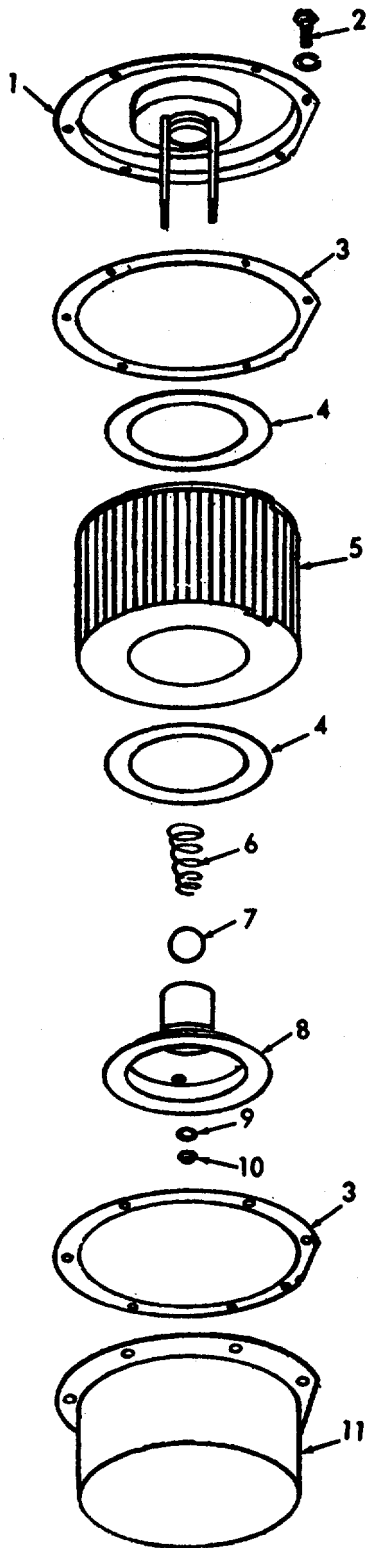


ME 3930-252-20P/16

Figure 16. Hydraulic Lift Carriage, Fork.

INDEX TO PARTS, FIGURE 16

Reference Number	Functional Group	Item Name
1	2405	BACK REST
2	2405	PIN
3	2405	LEVER'
4	2405	SPRING
5	2405	PIN
6	2405	FORK

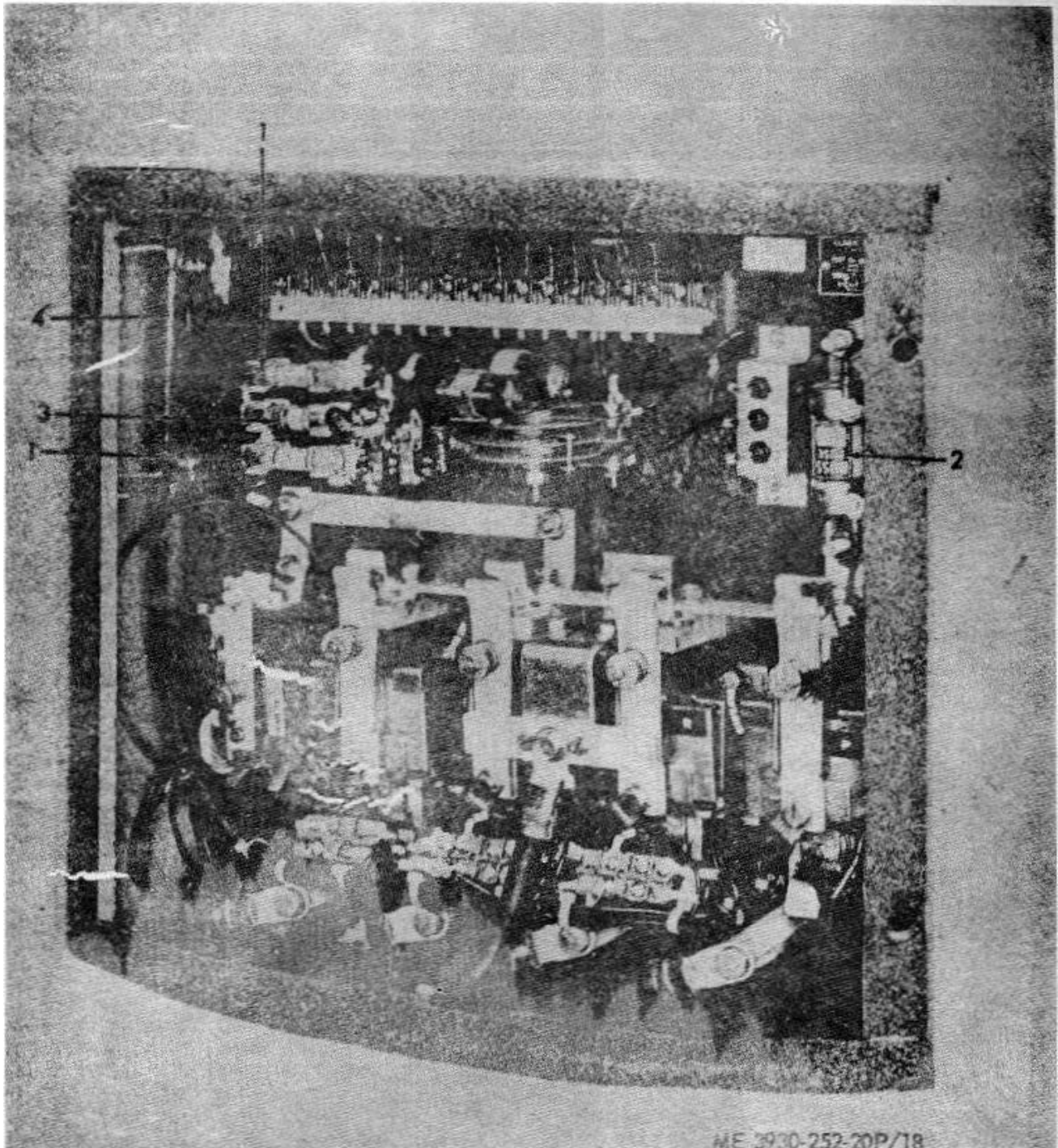


INDEX TO PARTS, FIGURE 17

Reference Number	Functional Group	Item Name
1	2406	COVER
2	2406	BOLT
3	2406	GASKET
4	2406	GASKET
5	2406	ELEMENT
6	2406	SPRING
7	2406	BALL
8	2406	PLATE
9	2406	WASHER
10	2406	NUT
11	2406	CASE

ME 3930-252-35P/23

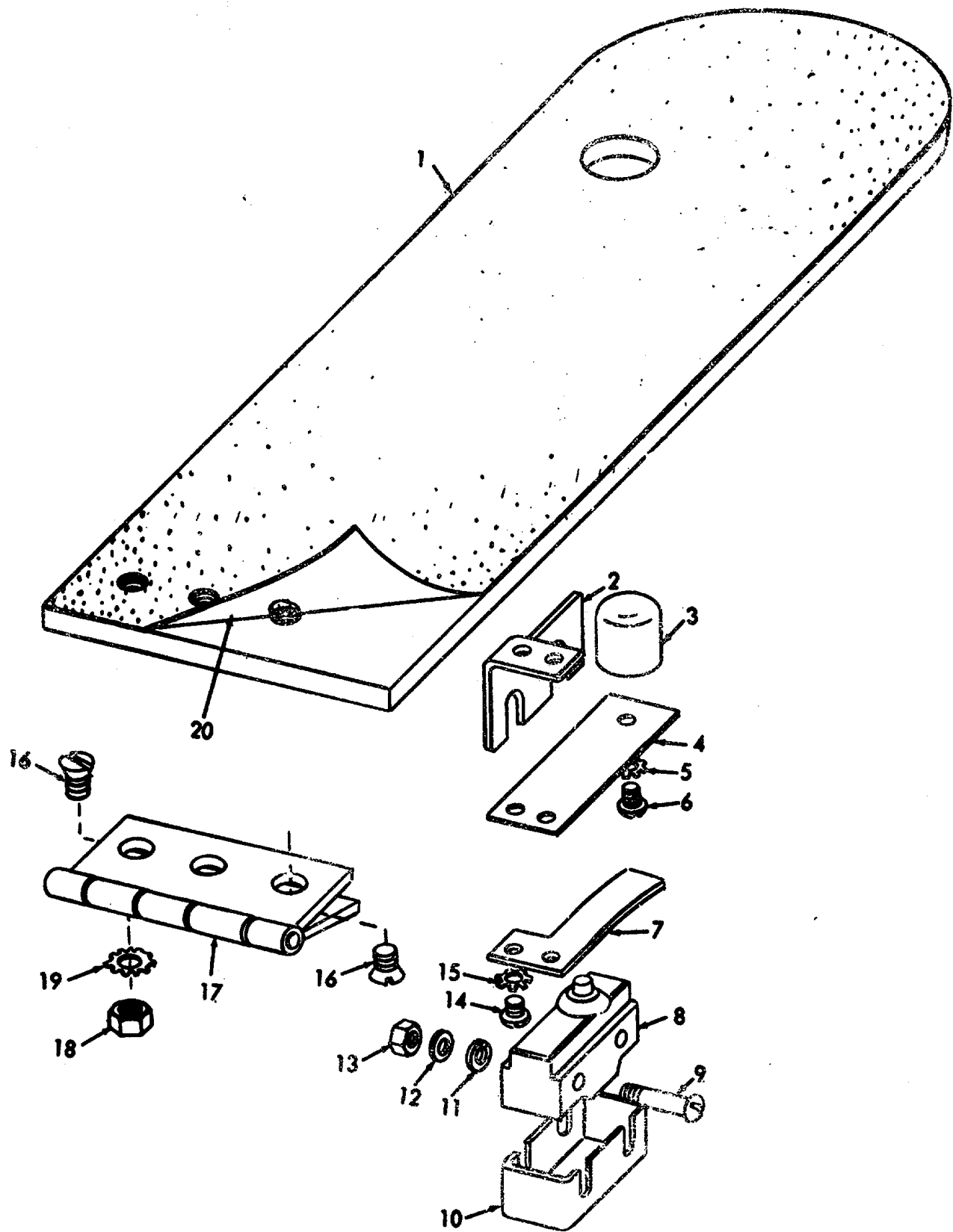
Figure 17. Hydraulic Filter.



**Figure.18. Master Control Panel.**

**INDEX TO PARTS, FIGURE 18**

<b>Reference Number</b>	<b>Functional Group</b>	<b>Item Name</b>
1	4011	FUSE
2	4011	FUSE
3	4011	FUSE
4	4014	RESISTOR

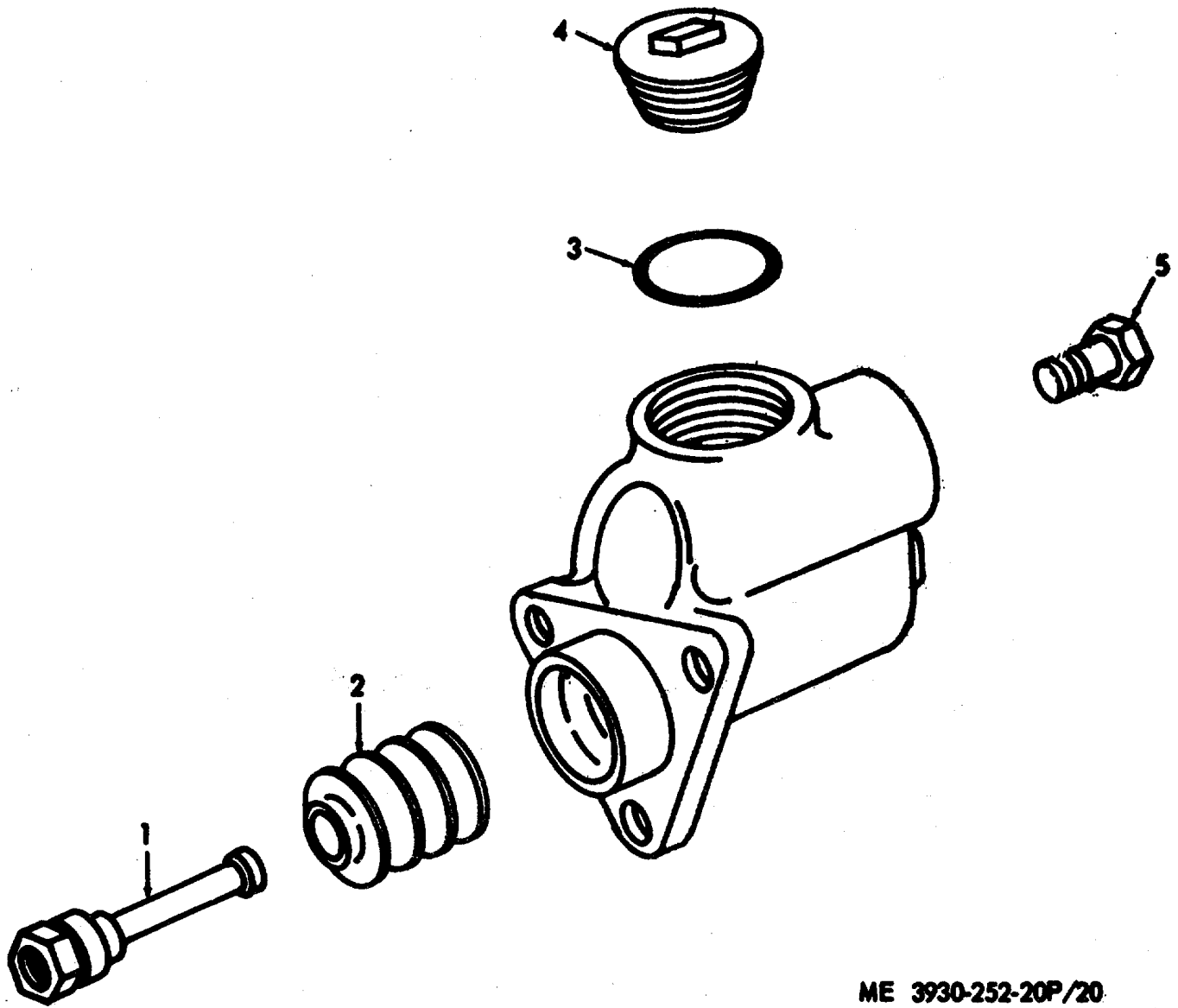


ME 3930-252-35P/28

Figure 19. Accelerator Pedal.

**INDEX TO PARTS, FIGURE 19**

<b>Reference Number</b>	<b>Functional Group</b>	<b>Item Name</b>	<b>Reference Number</b>	<b>Functional Group</b>	<b>Item Name</b>
1	0608	PEDAL	11	4012	WASHER
2	0608	BRACKET	12	4012	WASHER
3	0608	BUTTON	13	4012	NUT
4	0608	SPRING	14	0608	SCREW
5	0608	WASHER	15	0608	WASHER
6	0608	SCREW	16	0608	SCREW
7	0608	GUIDE	17	0608	HINGE
8	4012	SWITCH	18	0608	NUT
9	4012	SCREW	19	0608	WASHER
10	0608	COVER	20	0608	MAT

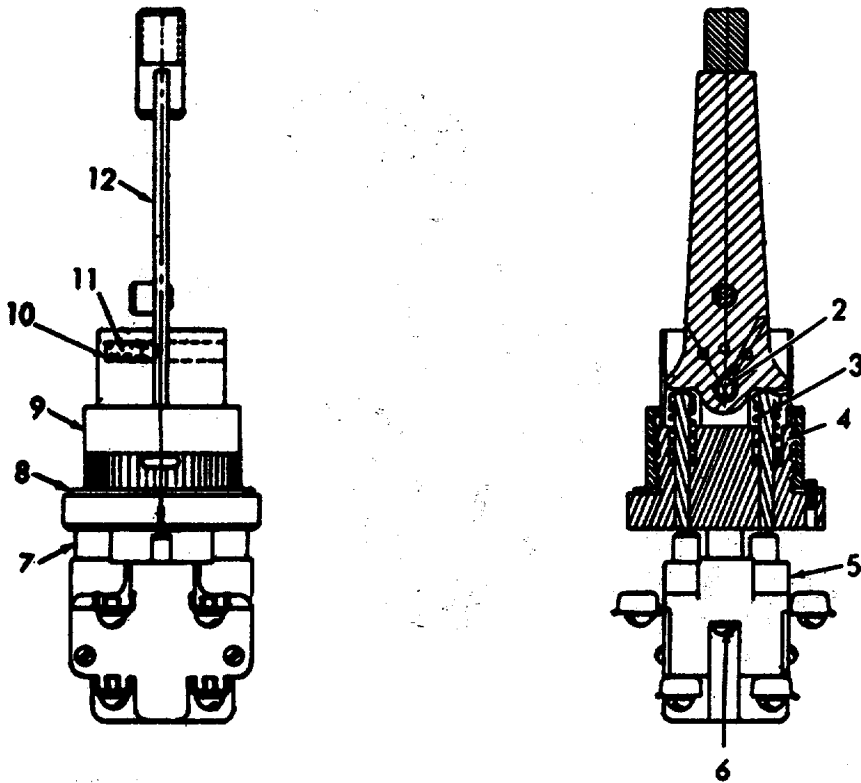
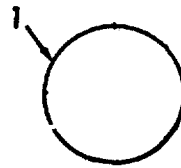


ME 3930-252-20P/20

Figure 20. Master Cylinder.

INDEX TO PARTS, FIGURE 20

Reference Number	Functional Group	Item Name
1	0608	ROD
2	0608	BOOT
3	0608	GASKET
4	0608	CAP
5	4010	BOLT



ME 3930-252-35P/32

Figure 21. Directional Control Lever.

INDEX TO PARTS, FIGURE 21

Reference Number	Functional Group	Item Name
1	4012	KNOB
2	4012	PIN
3	4012	PIN
4	4012	SPRING
5	4012	CONTACT
6	4012	SCREW
7	4012	SPACER
8	4012	GASKET
9	4012	NUT
10	4012	SPRING
11	4012	BALL
12	4012	HANDLE AY



**SECTION V. INDEX-FEDERAL STOCK NUMBER AND REFERENCE NUMBER  
CROSS-REFERENCE TO INDEX NUMBER**

<u>STOCK NUMBER</u>	<u>INDEX NUMBER</u>	<u>STOCK NUMBER</u>	<u>INDEX NUMBER</u>
2520-072-6721	00091	3930-800-9010	00317
2520-072-6723	00099	3930-805-9972	00405
2520-072-6732	00103	3930-806-0007	00379
2520-230-3726	00132	3930-937-3729	00361
2520-359-1528	00239	4330-876-4572	00401
2520-359-1528	00248	4720-072-9456	00181
2520-839-1055	00105	4720-204-1784	00265
2520-876-2781	00098	4720-204-1784	00411
2530-072-6736	00152	4720-204-1784	00488
2530-072-6738	00150	4720-629-5186	00404
2530-072-6739	00161	4730-010-0597	00385
2530-072-9463	00124	4730-018-4918	00221
2530-073-2152	00252	4730-018-9566	00421
2530-073-2162	00113	4730-050-4203	00360
2530-073-2162	00244	4730-050-4207	00220
2530-164-1935	00169	4730-050-4208	00112
2530-164-3338	00229	4730-050-4208	00346
2530-164-3568	00079	4730-050-4647	00260
2530-164-3568	00202	4730-052-3972	00261
2530-170-1899	00165	4730-072-9446	00162
2530-215-7352	00017	4730-172-0028	00111
2530-311-9644	00228	4730-172-0034	00178
2530-311-9662	00185	4730-172-0034	00219
2530-343-8161	00167	4730-204-1268	00319
2530-353-2988	00013	4730-278-3356	00107
2530-353-2991	00025	4730-278-5812	00164
2530-353-2993	00166	4730-289-5176	00108
2530-359-1529	00230	4730-359-3872	00106
2530-359-1529	00238	4730-375-1499	00272
2530-359-1529	00247	4730-384-8763	00226
2530-359-1828	00222	4730-467-3514	00435
2530-375-0751	00253	4730-674-6832	00391
2530-466-8624	00180	4730-674-6844	00390
2530-534-5568	00388	4730-674-6845	00389
2530-708-5262	00085	4730-737-5440	00163
2530-876-9629	00175	4730-754-0152	00430
2530-930-3314	00062	4730-908-3193	00414
2530-976-3331	00149	4820-272-3346	00384
2540-765-4833	00316	5305-012-0351	00327
2540-776-2844	00189	5305-012-1832	00029
2590-072-6694	00059	5305-012-1832	00458
2805-493-8110	00199	5305-013-1890	00027
3110-100-0359	00090	5305-013-2705	00028
3110-100-0376	00089	5305-013-2719	00460
3110-100-0556	00208	5305-018-1561	00295
3110-100-0747	00083	5305-022-6454	00326
3110-100-3553	00205	5305-069-5573	00154
3110-155-6699	00076	5305-267-8972	00292
3110-198-2169	00206	5305-267-8972	00294
3110-198-2170	00209	5305-269-2803	00026
3110-227-4058	00082	5305-269-2805	00172
3930-069-3625	00345	5305-269-2805	00337
3930-209-7777	00192	5305-269-2805	00368
3930-612-0767	00409	5305-269-2893	00061
3930-674-2908	00362	5305-269-3208	00077
3930-699-9435	00364	5305-269-3209	00080
3930-733-9729	00406	5305-269-3229	00296
3930-733-9730	00263	5305-274-2566	00298
3930-733-9730	00407	5305-282-3886	00459
3930-789-4897	00422	5305-285-5170	00203

**SECTION V. INDEX-FEDERAL STOCK NUMBER AND REFERENCE NUMBER  
CROSS-REFERENCE TO INDEX NUMBER (Continued)**

<u>STOCK NUMBER</u>	<u>INDEX NUMBER</u>	<u>STOCK NUMBER</u>	<u>INDEX NUMBER</u>
5305-297-0640	00068	5310-383-4677	00092
5305-559-9202	00176	5310-383-4677	00210
5305-573-5628	00293	5310-384-8810	00224
5305-576-7116	00097	5310-391-3586	00214
5305-724-5884	00069	5310-512-2082	00094
5305-725-4098	00291	5310-527-3288	00277
5305-725-4187	00353	5310-543-2705	00043
5305-761-4227	00290	5310-543-2705	00063
5305-954-2728	00481	5310-543-2705	00081
5305-954-2728	00482	5310-543-2705	00173
5305-983-8082	00299	5310-543-2705	00191
5306-072-6722	00088	5310-543-2705	00339
5306-072-6724	00100	5310-543-2705	00340
5306-072-9450	00216	5310-543-5653	00023
5306-298-1414	00147	5310-543-5653	00041
5306-316-4809	00116	5310-543-5653	00060
5306-709-2123	00087	5310-543-5653	00168
5306-715-7777	00009	5310-543-5973	00119
5306-833-9088	00398	5310-543-5973	00121
5310-012-0214	00329	5310-584-5007	00117
5310-012-0214	00330	5310-584-5272	00304
5310-012-0376	00322	5310-584-5272	00354
5310-012-0377	00190	5310-655-9371	00348
5310-012-0380	00177	5310-680-5384	00047
5310-012-0380	00306	5310-680-5384	00141
5310-012-0380	00307	5310-720-8536	00195
5310-012-0380	00309	5310-754-2006	00283
5310-012-0380	00310	5310-763-8905	00281
5310-012-0381	00204	5310-809-8533	00072
5310-012-0383	00148	5310-833-3340	00042
5310-012-0614	00276	5310-833-3340	00374
5310-012-0622	00476	5310-843-0588	00078
5310-012-0622	00477	5310-843-0647	00101
5310-012-1574	00305	5310-843-0647	00155
5310-012-1574	00308	5310-905-4600	00321
5310-012-1752	00472	5315-013-7185	00251
5310-012-1841	00484	5315-013-7214	00093
5310-012-1841	00485	5315-043-1782	00352
5310-012-4944	00282	5315-052-0147	00350
5310-013-1044	00474	5315-298-1480	00211
5310-013-1046	00311	5315-298-1499	00227
5310-013-4530	00022	5315-616-5523	00336
5310-013-4530	00448	5315-674-9484	00367
5310-013-8473	00031	5315-815-8840	00123
5310-013-8473	00032	5315-815-8840	00129
5310-013-8473	00473	5315-815-8840	00136
5310-013-8593	00033	5315-816-1794	00048
5310-013-8617	00375	5315-816-1794	00196
5310-045-1001	00425	5315-839-5822	00233
5310-050-3377	00323	5315-839-5822	00242
5310-073-2153	00246	5315-842-3044	00122
5310-073-2154	00237	5315-842-3044	00128
5310-073-2161	00225	5315-842-3044	00135
5310-073-2161	00236	5315-983-5334	00338
5310-073-2161	00245	5330-064-7777	00378
5310-194-0607	00470	5330-064-7777	00392
5310-255-6408	00284	5330-064-7777	00394
5310-359-1665	00232	5330-064-7777	00396
5310-359-1665	00241	5330-291-6658	00174
5310-359-1665	00250	5330-298-0654	00212

**SECTION V. INDEX-FEDERAL STOCK NUMBER AND REFERENCE NUMBER  
CROSS-REFERENCE TO INDEX NUMBER (Continued)**

<u>STOCK NUMBER</u>	<u>INDEX NUMBER</u>	<u>STOCK NUMBER</u>	<u>INDEX NUMBER</u>
5330-528-2855	00271	5905-978-4720	00050
5330-674-6843	00335	5905-978-4720	00479
5330-714-5265	00386	5920-072-6679	00432
5330-733-2992	00096	5920-072-6679	00439
5330-737-2312	00179	5920-548-3125	00433
5330-876-9494	00097	5920-548-3125	00440
5340-072-6729	00095	5920-671-4569	00441
5340-072-6734	00159	5930-064-7749	00005
5340-072-6737	00158	5930-072-6668	00449
5340-164-3063	00275	5930-072-9455	00057
5340-282-0060	00171	5930-272-1280	00007
5340-285-1360	00120	5930-789-4892	00463'
5340-349-0919	00300	5930-886-9998	00133
5340-353-2994	00170	5930-886-9998	00469
5340-359-2853	00118	5930-887-0000	00193
5340-551-6123	00055	5930-887-0000	00462
5340-674-9843	00371	5935-072-6692	00014
5355-518-0921	00006	5935-072-6693	00015
5355-668-7897	00044	6220-937-3735	00039
5355-765-5688	00342	6240-155-8720	00046
5355-765-5688	00447	6240-196-4519	00045
5905-789-7645	00051	6240-635-4406	00040
5905-789-7645	00480	6645-072-6696	00004
5905-978-4711	00049	6680-072-6697	00003
5905-978-4711	00478	9320-371-6078	00010

<u>REFERENCE NO.</u>	<u>MFG CODE</u>	<u>INDEX NO.</u>	<u>REFERENCE NO.</u>	<u>MFG CODE</u>	<u>INDEX NO.</u>
A31009-036-51	81487	00467	100575	12603	00210
BA3ST	91929	00193	101158	12603	00094
BA3ST	91929	00462	101364	12603	00214
CLASS8963EQ2119	81487	00464	103046	12603	00238
FC12103	63477	00167	103293	12603	00062
FC1205	63477	00013	103405	12603	00239
FC2037	63477	00017	103405	12603	00248
FC2678	63477	00164	103406	12603	00230
FC2697	63477	00025	103406	12603	00247
FC2928	63477	00169	103951	12603	00253
FC2930	63477	00166	104595	12603	00079
FC2931	63477	00170	104595	12603	00202
FC3474	63477	00163	104942	12603	00105
FC6019	63477	00174	106546	12603	00100
FC673	63477	00430	106547	12603	00101
PC927	63477	00010	107171	12603	00113
FC939	63477	00171	107171	12603	00244
FD22902	63477	00175	107172	12603	00252
FE1476	63477	00165	107196	12603	00096
GZ2RDT	91929	00463	107218	12603	00098
MS15570-63	96906	00046	107219	12603	00099
MS28775-11-3	96906	00271	107224	12603	00084
MS35842-12	96906	00414	107237	12603	00207
M1981	74400	00004	107311	12603	00153
OT10	71424	00433	107312	12603	00139
OT10	71424	00440	107313	12603	00143
1G11578	12603	00444	107315	12603	00145
10G616J	12603	00369	107317	12603	00149
10J28	12603	00423	107323	12603	00159
100575	12603	00092	107324	12603	00146

**SECTION V. INDEX-FEDERAL STOCK NUMBER AND REFERENCE NUMBER  
CROSS-REFERENCE TO INDEX NUMBER (Continued)**

REFERENCE NO.	MFG CODE	INDEX NO.	REFERENCE NO.	MFG CODE	INDEX NO.
107325	12603	00151	2357C3G6	81487	00465
107327	12603	00152	26G816	12603	00437
107328	12603	00158	26822	60038	00208
107330	12603	00150	26882	60038	00205
107334	12603	00140	2720	60038	00090
107403	12603	00144	2793	60038	00083
107418	12603	00237	303512	12603	00018
107418	12603	00246	304914	12603	00445
107419	12603	00225	317075	12503	00011
107419	12603	00236	317076	12603	00019
107419	12603	00245	328284	12603	00070
107467	12603	00085	328285	12603	00066
107783	12603	00157	382287	12603	00065
107802	12603	00162	328289	12603	00071
107806	12603	00156	328676	12603	00318
108780	12603	00075	332301	12603	00131
108829	12603	00091	334432	12603	00127
109157	12603	00086	3350212	80201	00212
109769	12603	00088	335548	12603	00223
11G410J	12603	00457	335549	12603	00235
11K6	12603	00390	337442	12603	00443
110222	12603	00097	338984	12603	00372
110381	12603	00103	342951	12603	00366
111563	12603	00231	343740	12603	00373
111563	12603	00240	343983	12603	00370
111563	12603	00249	3720	60038	00089
15K6	12603	00385	3781	60038	00082
15K7	12603	00377	390478	12603	00134
1501880	70040	00003	390512	12603	00461
15123	60038	00206	390574	12603	00466
15245	60038	00209	391415	12603	00125
1525-10	00624	00488	392008	12603	00124
152540-48	00624	00264	399335	12603	00302
154128	62983	00388	4F07115	12603	00197
16DP6	59875	00226	4487C6X1	81487	00468
16H16	12603	00383	4803	91929	00133
16SA205	59875	00229	4803	91929	00469
1610551	12603	00415	5H4	12603	00055
1610552	12603	00420	50053	13445	00005
1610553	12603	00416	53717DA	31007	00044
1610554	12603	00419	6H12	12603	00382
1610555	12603	00417	6H160	12603	00381
1610556	12603	00418	604405	12603	00228
1610649	12603	00288	604407	12603	00224
1611071	12603	00446	609942	12603	00192
1613417	12603	00051	613475	12603	00118
1613417	12603	00480	613750	12603	00180
1613477	12603	00054	615374	12603	00179
1613522	12603	00351	616659	12603	00364
1613599	12603	00059	616775	12603	00470
17K5	12603	00258	616813	12603	00072
17K5	12603	00387	619025	12603	00199
17K7	12603	00391	620238	12603	00185
18G1006	12603	00483	624280	12603	00347
18K5	12603	00261	624597	12603	00007
18X7	12603	00395	625383	12603	00441
2J6208	12603	00120	637793	12603	00116
208W	21335	00076	641863	12603	00365
219199	24617	00108	641929	12603	00132
22F4G	12603	00380	648521	12603	00198

**SECTION V. INDEX-FEDERAL STOCK NUMBER AND REFERENCE NUMBER  
CROSS-REFERENCE TO INDEX NUMBER (Continued)**

REFERENCE NO.	MFG CODE	INDEX NO.	REFERENCE NO.	MFG CODE	INDEX NO.
652963	12603	00035	734635	12603	00356
653785	12603	00342	736525	12603	00403
653785	12603	00447	738549	12603	00399
654618	12603	00363	738551	12603	00303
654841	12603	00350	741556	12603	00216
655504	12603	00049	746082	12603	00212
655504	12603	00478	746899	12603	00188
657652	12603	00262	746932	12603	00039
659764	12603	00095	748662	12603	00412
659891	12603	00405	751683	12603	00278
660160	12603	00404	752044	12603	00361
660408	12603	00410	756446	12603	00362
661931	12603	00349	756447	12603	00367
662458	12603	00255	756991	12603	00371
663957	12603	00009	759058	12603	00182
663970	12603	00316	759097	12603	00183
664131	12603	00142	761422	12603	00184
664380	12603	00328	761429	12603	00181
664832	24617	00409	762166	12603	00358
664901	12603	00194	763755	12603	00187
665209	12603	00335	763818	12603	00393
665755	12603	00357	765830	12603	00436
666339	12603	00359	765837	12603	00215
666853	12603	00259	765838	12603	00431
666991	12603	00189	765841	12603	00014
672257	12603	00406	766526	12603	00285
672258	12603	00263	766543	12603	00234
672258	12603	00407	766545	12603	00243
672942	12603	00260	777620	12603	00030
674905	12603	00378	777622	12603	00012
674905	12603	00379	777624	12603	00016
675760	12603	00280	782969	12603	00038
677565	12603	00301	783938	12603	00067
677738	12603	00036	784662	12603	00266
677739	12603	00053	791837	12603	00426
677741	12603	00052	793876	12603	00344
690099	12603	00272	794237	12603	00279
704518	12603	00106	794257	12603	00037
71F3	12603	00384	794258	12603	00287
710779	12603	00289	794264	12603	00057
712093	12603	00471	794272	12603	00024
725141	12603	00333	794274	12603	00021
732562	12603	00345	794293	12603	00020
732655	12603	00130	796161	12603	00334
732683	12603	00286	797646	12603	00413
732731	12603	00314	798392	12603	00269
732732	12603	00313	798393	12603	00270
732733	12603	00315	798402	12603	00267
732736	12603	00324	798403	12603	00268
732828	12603	00137	798853	12603	00050
732848	12603	00015	798853	12603	00479
733237	12603	00320	799136	12603	0040e
733240	12603	00317	799136	12603	00434
733288	12603	00397	8157	13445	00006
733289	12603	00401	84F6	12603	00257
733290	12603	00400	857408	80659	00275
733291	12603	00422	859484	12603	00222
733292	12603	00424	863722	12603	00045
733293	12603	00427	871757	12603	00161
733295	12603	00402	881558	12603	00102

**SECTION V. INDEX-FEDERAL STOCK NUMBER AND REFERENCE NUMBER  
CROSS-REFERENCE TO INDEX NUMBER (Continued)**

<b>REFERENCE NO.</b>	<b>MFG CODE</b>	<b>INDEX NO.</b>	<b>REFERENCE NO.</b>	<b>MFG CODE</b>	<b>INDEX NO.</b>
882907	12603	00126	889312	12603	00455
883819	12603	00040	889312	12603	00456
888814	12603	00432	91F6	12603	00386
888814	12603	00439	91F7	12603	00392
889312	12603	00450	91F7	12603	00394
889312	12603	00451	91F7	12603	00396
889312	12603	00452	9410282	24617	00389
889312	12603	00453	97F6	12603	00256
889312	12603	00454			

By Order of the Secretary of the Army:

Official:

KENNETH G. WICKHAM,  
*Major General, United States Army,  
The Adjutant General.*

W. C. WESTMMORELAND,  
*General, United States Army,  
Chief of Staff.*

Distribution:

To, be distributed in accordance with DA Form 12-25, Section I, (qty rqr block No. 190) organizational maintenance requirements for Truck, Fork Lift, Electrical.

☆ U.S. GOVERNMENT PRINTING OFFICE: 1994 O - 300-421 (82332)

RECOMMENDED CHANGES TO EQUIPMENT TECHNICAL PUBLICATIONS



*THEN...JOT DOWN THE DOPE ABOUT IT ON THIS FORM. CAREFULLY TEAR IT OUT, FOLD IT AND DROP IT IN THE MAIL.*

**SOMETHING WRONG WITH PUBLICATION**

FROM: (PRINT YOUR UNIT'S COMPLETE ADDRESS)

DATE SENT

PUBLICATION NUMBER

PUBLICATION DATE

PUBLICATION TITLE

**BE EXACT PIN-POINT WHERE IT IS**

PAGE NO.	PARA-GRAPH	FIGURE NO.	TABLE NO.

**IN THIS SPACE, TELL WHAT IS WRONG AND WHAT SHOULD BE DONE ABOUT IT.**

PRINTED NAME, GRADE OR TITLE AND TELEPHONE NUMBER

SIGN HERE



## The Metric System and Equivalents

### *Linear Measure*

1 centimeter = 10 millimeters = .39 inch  
 1 decimeter = 10 centimeters = 3.94 inches  
 1 meter = 10 decimeters = 39.37 inches  
 1 dekameter = 10 meters = 32.8 feet  
 1 hectometer = 10 dekameters = 328.08 feet  
 1 kilometer = 10 hectometers = 3,280.8 feet

### *Weights*

1 centigram = 10 milligrams = .15 grain  
 1 decigram = 10 centigrams = 1.54 grains  
 1 gram = 10 decigrams = .035 ounce  
 1 decagram = 10 grams = .35 ounce  
 1 hectogram = 10 decagrams = 3.52 ounces  
 1 kilogram = 10 hectograms = 2.2 pounds  
 1 quintal = 100 kilograms = 220.46 pounds  
 1 metric ton = 10 quintals = 1.1 short tons

### *Liquid Measure*

1 centiliter = 10 milliliters = .34 fl. ounce  
 1 deciliter = 10 centiliters = 3.38 fl. ounces  
 1 liter = 10 deciliters = 33.81 fl. ounces  
 1 dekaliter = 10 liters = 2.64 gallons  
 1 hectoliter = 10 dekaliters = 26.42 gallons  
 1 kiloliter = 10 hectoliters = 264.18 gallons

### *Square Measure*

1 sq. centimeter = 100 sq. millimeters = .155 sq. inch  
 1 sq. decimeter = 100 sq. centimeters = 15.5 sq. inches  
 1 sq. meter (centare) = 100 sq. decimeters = 10.76 sq. feet  
 1 sq. dekameter (are) = 100 sq. meters = 1,076.4 sq. feet  
 1 sq. hectometer (hectare) = 100 sq. dekameters = 2.47 acres  
 1 sq. kilometer = 100 sq. hectometers = .386 sq. mile

### *Cubic Measure*

1 cu. centimeter = 1000 cu. millimeters = .06 cu. inch  
 1 cu. decimeter = 1000 cu. centimeters = 61.02 cu. inches  
 1 cu. meter = 1000 cu. decimeters = 35.31 cu. feet

## Approximate Conversion Factors

<i>To change</i>	<i>To</i>	<i>Multiply by</i>	<i>To change</i>	<i>To</i>	<i>Multiply by</i>
inches	centimeters	2.540	ounce-inches	Newton-meters	.007062
feet	meters	.305	centimeters	inches	.394
yards	meters	.914	meters	feet	3.280
miles	kilometers	1.609	meters	yards	1.094
square inches	square centimeters	6.451	kilometers	miles	.621
square feet	square meters	.093	square centimeters	square inches	.155
square yards	square meters	.836	square meters	square feet	10.764
square miles	square kilometers	2.590	square meters	square yards	1.196
acres	square hectometers	.405	square kilometers	square miles	.386
cubic feet	cubic meters	.028	square hectometers	acres	2.471
cubic yards	cubic meters	.765	cubic meters	cubic feet	35.315
fluid ounces	milliliters	29.573	cubic meters	cubic yards	1.308
pints	liters	.473	milliliters	fluid ounces	.034
quarts	liters	.946	liters	pints	2.113
gallons	liters	3.785	liters	quarts	1.057
ounces	grams	28.349	liters	gallons	.264
pounds	kilograms	.454	grams	ounces	.035
short tons	metric tons	.907	kilograms	pounds	2.205
pound-feet	Newton-meters	1.356	metric tons	short tons	1.102
pound-inches	Newton-meters	.11296			

## Temperature (Exact)

°F	Fahrenheit temperature	5/9 (after subtracting 32)	Celsius temperature	°C
----	------------------------	----------------------------	---------------------	----

**TM 10-3930-252-20P TRUCK, LIFT, FORK, ELECTRIC, SOLID RUBBER TIRES, 4,000 LBS CAPACITY - 1968**

**PIN: 028448-000**